



OPUNAKE & COASTAL NEWS

Vol. 22 No. 23 November 29, 2012
www.opunakecoastalnews.co.nz

Published every
Thursday Fortnight

Phone and Fax 761-7016
A/H 761-8206
for Advertising and Editorial
ISSN 1171-0624

Inside...



New managers at Opunake Beach Kiwi Holiday Camp. See page 9.



Dame Malvina Major returns home to sing. Turn to page 19.



Cr Bonita Bigham takes a stand against littering. Councillors Comment page 4.



Principal's speech has impact. Maria Potter of Opunake High School. See page 3.

Ron's attic back in business



Owner/Curator Nigel Ogle (left) watches Robert Surgenor cut the official ribbon at the official opening of the Ronald Hugh Morrieson restored attic.

Ron's attic back in business on Monday November 19
There was a special celebration at Tawhiti Museum – it was the official opening of the attic which once



Ronald Hugh Morrieson hard at work writing his fifth (!) novel.

was part of the house Ronald Hugh Morrieson lived in for virtually all his life. Owner/Curator Nigel Ogle has done an excellent job restoring the attic which sat for 19 years on Robert Surgenor's property on the outskirts of Hawera, after he saved it from demolition, as was the fate of the rest of the house. The restoration project took almost a year.

Before the official cutting of the ribbon was completed by Robert Surgenor, a function was held in Tawhiti's café at which the mayor Ross Dunlop was present. Later, when viewing the restored attic Mr Dunlop said he was gratified that now there was a place one could go to honour the writer.

Nigel Ogle, in his speech explained what a precarious state the attic was in, which included quite a lot of rot. He also paid tribute to several people involved in the project, but reserved special praise for Robert Surgenor who acquired the attic, thus saving it from demolition.

Present at the opening were several people who were significant in Ron's life including his cousin Shirley Rumney and Barbara Patterson whose husband Gerald was one of Ron's closest friends. Also present was Eric Johnson, who played music alongside Ron and sometimes visited the writer.

A neighbour of Ron's, Robin Chadwick, was also present. It was his son Tim who led the charge (ultimately unsuccessful) to

persuade the local authorities to save the author's house because of its literary importance. "He was quite passionate about saving the house", said Mr Chadwick. Sadly Tim, a talented teacher and author, died in a car crash north of New Plymouth.

The attic has been established as the second storey of a purpose built structure at Tawhiti. The first floor has memorabilia relating to Ron including books. It also has the complete film set from the opening scene of 'Predicament' which was filmed in Eltham and Hawera in 1999.

The stairs take you to the attic itself where (a model of) Ron, clad in pyjamas, cigarette in hand, is busy writing by the window, which once looked out on Regent Street, with a view of the water tower. His cluttered room also contains items relating to his other passion – music.

In an alcove is a video constantly playing, featuring interviews with nota-

ble people such as Barbara Patterson and Shirley Rumney. Also interviewed is Kevin Kawana, the brother of Ron's girlfriend Georgina who reveals that Ron fathered a child with the woman. His son, who now lives in Australia, is also called Ronald.

Casting her knowledgeable eye over the displays was Barbara Patterson, who commented on the jazz that was playing (eg Louis Armstrong) as the music her late husband introduced her to. Describing Ron as a "chameleon" who could engage anyone in conversation regardless of their station, she finally referred to the great friendship her husband had with Ron. "If Gerald and Ron were alive today they would still be close friends", she asserted.

Make sure you find time to visit this superb addition to our literary landscape which Mayor Dunlop described as "absolutely fabulous".



Two people who knew Ron well: Barbara Patterson (left) and the author's cousin Shirley Rumney.

IT'S A TEAM EFFORT FROM START TO FINISH

CONTACT US FOR:
PLUMBING | GAS FITTING
LOG FIRES | BATHROOM DESIGN
SOLAR AND PELLET FIRES
NEW HOMES AND RENOVATIONS

WE TRAVEL TARANAKI WIDE!

Penniall Jordan
 PLUMBING • HEATING • GASFITTING
The heat is on!

191 Broadway – Stratford
 Phone (06) 765 5336
 www.pennialljordan.co.nz

4 Square 45
 All you need

Great Prices!
Great Service!
Great Range!
Great deals instore this week!

... Great to see you!

We welcome RD1 and Farmlands Cards

Big enough to be competitive, small enough to care

Open every day 7:30 – 9pm
77 Tasman St, Opunake Ph: 06 761 8668

At last an Architect designed home on your site for \$550K* Total cost Move in!



Why settle for brick & tile?

Saunders Architects Tel 06 759 7430

*Other Packages from \$350,000

Turn Heads

Phone 06 761 7466

88 Tasman Street, Opunake, Taranaki

Tue-Fri 9am-5pm
Late nights & Saturday by appointment.

Style your hair with Rhonda



MEETINGS:
Sundays at 38 Tayler Street, Eltham at 10.30am.

Phone 06 764 7358 for other Bible Studies.

Eltham Message Church
Pastor Richard Oliver

We are an independent Bible Believing Church
All are most welcome
www.messgechurch.com

The next issue of the Opunake & Coastal News is on December 13

OPUNAKE & COASTAL NEWS

Registered office: 23 Napier Street, Opunake
PO Box 74, Opunake

Telephone and Fax: (06) 761-7016 a/h ph: (06) 761-8206


e-mail: Advertising ads@opunakecoastalnews.co.nz
Editorial editorial@opunakecoastalnews.co.nz
Accounts accounts@opunakecoastalnews.co.nz

website: www.opunakecoastalnews.co.nz

Editor Journalists: Bernice McKellar - Rolland McKellar Kathryn Stanley

Delivery: Thursday, fortnightly

Registered as a newspaper.
Member of the Community Newspapers Association of NZ



The Opunake and Coastal News is distributed free to every home and business within the rural area bounded in the north by the New Plymouth city border, extending east to Egmont Village, and around to the edge of Stratford, south to the Hawera city border and inland to Kaponga and through Eltham.



Letters to the editor

Send your your views to
"Letters to the Editor"
23 Napier Street, Opunake,
Fax: (06) 761 7016
email: editorial@opunakecoastalnews.co.nz
You are welcome to use a pseudonym but must supply your name and address.

2012 White Ribbon campaign focuses attention on non-physical violence

The 2012 White Ribbon campaign is focusing attention on non-physical violence - a category of violence that uses emotional or verbal behaviour to control someone through fear.

This form of abuse is often underestimated and is not recognised by many people because it can be subtle and hidden. Survivors say psychological abuse attacks their spirit and self-esteem, and the effects can last the longest. Perpetrators may threaten victims, children, possessions and animals. This violence can affect a person's emotions, personality, and

may lead to poor health. Victims of emotional abuse can feel like they are losing control of their minds and may always feel in a state of tension. Cyber bullying is a form of non-physical violence. Highlighting cyber bullying as a form of violence will help both men and women recognise that this form of non-physical violence is not ok. No violence is tolerable and the actions of Constable Penni Eggleton in recognising that cyber bullying is a form of non-physical violence, may have saved a young women's life. Two years ago, Constable Eggleton helped a Well-

ington woman in her early 20s who was receiving hundreds of threatening text messages from an ex-boyfriend - a man with a history of violent behaviour towards women. This story forms part of a NZ Police recruitment drive timed to coincide with the White Ribbon Campaign which aims to encourage people to take action to end violence towards women. Highlighting cyber bullying as a form of violence will help both men and women recognise that this form of non-physical violence is not ok. Like Constable Eggleton, we all have a role to play in reducing violence, whether by opting for a ca-

reer in the police or as someone who can influence your own friends and workmates. That's why the White Ribbon Campaign is asking all New Zealanders to take the White Ribbon Pledge "to never commit condone or remain silent about men's violence towards women". By showing your support, you can help change the behaviour of those around you and help end men's violence towards women. Wear a White Ribbon in support of the pledge, or take the pledge at www.whiteribbon.org.nz and show your support online.

*Rob McCann
White Ribbon Campaign Manager*

STDC responds to Letter in previous issue - Fired up and wanting answers

Following the initial attempt to burn the stockpiled rubbish in March, Council and its contractor (Dreavers) continued to monitor the condition of the debris with a view to burning and reinstating the site when the material was drier and wind and weather conditions were more favourable in late spring /early summer. However, a local Opu-

nake community group approached the Council to undertake the clean-up voluntarily. This was agreed to on condition that any burning would be undertaken with due consideration for the residents of Opunake. Allowing a local group to handle the project acknowledged that residents could seize the opportunity quicker than a contractor who would

need to move machinery from another site. The decision by members of the group to light the fires when conditions were not favourable was unfortunate, but highlights the difficulty of finding appropriate wind conditions for burning in Opunake's coastal environment. While these fires caused an undesirable smoke in-

cident on two occasions, they were never the less not "out of control" in that they were unlikely to cause permanent damage to other property. The arrangement for the sale of timber for firewood from the site was never going to be at a level where the income would meet the cost.

John Sargeant, STDC properties/facilities manager

BBC (Bible Believers Corner) Israel


A small community is building itself a future on top of a stony hill. The crops in the valley below have to be protected from destructive neighbours. All around rocks cover the uncultivated area, hampering the start of future farming projects. These rocks are moved at night, after the digger driver has already done a days work in the city. The government would confiscate the digger if it were seen being used in daylight hours. This is modern day Samaria in Israel, better known through the media as the West Bank. I visited two such towns in the last week of October. One was relatively new the other dating from the late 1960s. Initially, after the Six Day War, the Israeli government encouraged settlers to build new towns on bare, unused areas and to create farms from wasteland. Many

did, but policies change and due to today's overseas political pressure, especially from the USA, the government is now reluctant to be seen encouraging these people. The men and women of these towns have had to equip themselves for their own defence when attacked as army support is slow to arrive. They are determined to keep their land, raise children, and turn barren rock strewn Samarian ground into a Garden of Eden. Samaria, or the West Bank, is claimed to be land occupied by a foreign power. It always has been! From the time of Ancient Egypt, this land has been occupied, by many foreign powers, Babylonians, Greeks and Romans to name a few. More recently the Turks occupied it from 1516, the British from 1918, then Syria soon after that. In 1948 Jordan gained


sovereignty. It is now part of Israel because of the Six Day War. The Six Day war of 1967 was the result of increased terrorist attacks, the closing of international waters to Israeli shipping, and Egypt occupying the Sinai with the stated attempt of completely destroying the nation of Israel. Syria and Jordan joined with Egypt and all were backed with forces and support from many other Arab nations. It was all over in six days, due to air superiority, with Israel the victor. Egypt lost Gaza, Sinai and even the Suez Canal, Syria lost the strategic Golan Heights and Jordan lost Samaria. Israel has had to fight for its life many times in the last 60 years. It has given Suez and Sinai back to Egypt, turned out its own Jewish settlers from conquered Gaza and given the land back to the

Palestinians, all in return for peace. In spite of this attacks continue. Over recent years missiles, often supplied through Egypt, have been flying from Gaza into Israel very day with little or no media comment. The latest development of firing rockets in swarms and the use of new longer-range missiles is news because it is a major threat to Israel's security. This is likely to result in Israeli military action and that is the stuff news agencies love. Any response to the new threats will probably be called Israeli aggression but little, if any, condemnation will be directed at the national leaders who allow their army and citizens to fire at targets in another country! As long, that is, as the country being fired at is Israel.

Continued page 5



Unification Church of New Zealand
Family Federation for World Peace & Unification
10.30am Sunday Service
Peter & Vivi Holdem, 2 Tayler Street, Eltham



"The fundamental illness of today's society is irresponsibility". Rev Sun Myung Moon

“We have grown some really good people for this rapidly changing world.” - Opunake High School Principal Maria Potter

Opunake High School recently held their Senior prize giving, and School principle, Maria Potter reflected on the year that had been as well as paying tribute to retiring Deputy Principal David Nicholas’ 37 years service. Here is part of Maria’s speech:

Haere mai, haere mai, nau- It has been a privilege to
mai o tatou kura mo tenei serve as Principal at Opu-
ra nunui. Nga mihi nui ki a nake High School. This year
koutou katoa. has seen the school go to an
Welcome to our senior even higher level of success
prizegiving – special wel- in many ways. We have had



Above: Opunake High School Principal Maria Potter

knowledge the huge part played by staff, the board and Whanau in supporting such amazing student endeavours.

Although we all know that taking part is a key element in team sports, school events and life in general, winning is what makes us push ourselves and achieve our full potential. I am very impressed with the achievements of everyone here today, but I am especially in awe of those of you whose efforts will be rewarded. Congratulations for striving to exceed expectations and the reward that has brought you.

In 2012 we have come a long way as a school. We have come a long way in our development of young people – with self-belief and values. They are confident achievers, who want to make a difference. Our year 13’s are keen to get out in the world and on with the next phase in their lives, endowed with the DREAM values, resilience and resources to be able to make sensible decisions when

they face the challenges ahead.

We have grown some really good people for this rapidly changing world.

No one knows more about the changing world than one of our colleagues who will be leaving us at the end of the year.

When he started teaching at Opunake – I had just started primary school, so whilst I can’t remember what it was like I was able to research it. There was no internet back then. There was no email. Fax was the hottest technology. PCs were only just entering into business life and mobile phones were called car phones and only a few people could afford them. New Zealand’s second TV channel started broadcasting and Mark Williams was the king of the local pop scene with his number 1 hit, ‘Yesterday was just the beginning of my life’. And for Mr David Nicholas it was just that; a beginning of what was to become 37 years of dedicated service at our school.

come to Ross and Jan Dunlop, Andy Whitehead, Kuia Val, Kuia Rona, Board Members, Students, Staff, Whanau and friends of our school. We celebrate these and ac-

outstanding achievements in academic examinations, the performing arts and in the stunning successes of our many sporting codes. We celebrate these and ac-

Opunake High School are holding a Wine and Cheese Evening to Celebrate David Nicholas’ Service to the School on the 7th December at 7pm. If you would like to attend you can RSVP ON 06 761 8723

TRANSPACIFIC
INDUSTRIAL SOLUTIONS

Septic Tank Cleaning
Water Deliveries
Waste Disposal
Drain Flushing
Waterblasting

New Plymouth 06 755 9150
Hawera 06 272 8725

Correction



We are sorry for the mis-naming of the two cousins of the Opunake & Coastal News. The photo shows Heather Engelen (left) and Shirley Rumney. The or-
der was reversed in the November 1 story.

Editor

Apology

I would like to apologise for the incorrect date for Opunake’s Market Day being reported in the last edition of the Opunake & Coastal News.

Editor

The next issue of the Opunake & Coastal News is on December 13

Coastal Meat PROCESSORS

PH (06) 752-4280
Mobile 0274 483 568
Garthew St, Okato

LICENSED SLAUGHTERMAN & QUALIFIED BUTCHERS

Wishing everyone a Merry Christmas

Taking bookings for the New Year

**Don’t forget our meat treats:
Frankfurters, cheerios for the kids,
salami for dinner parties, and swiss rolls
for the BBQ and sausages and patties.**

PGG Wrightson Real Estate

Selling your property? Then call me.

- With over 175 years of local knowledge and experience, PGG Wrightson Real Estate are the leaders in the field. We work together as a team giving our clients the best results and outcome.
- Our nationwide network and referral system gives you access to buyers and properties throughout New Zealand.

John Parry | B 06 278 0420 | M 0274 36 98 98 | E jtparry@xtra.co.nz

Open letter to all litterbugs

their crap wherever they like.

Glass, plastic, cardboard, paper, metal... you can see it all along our country roads these days and it really brases me off!

A couple of years ago a handful of us in Manaia did a pre-Christmas clean-up along a stretch of SH45 leading into our town from Hawera. We ranged in age from a 70-something year old great grandmother to my then 13-year-old son. It took us about three hours on a hot, muggy day and we collected a whole trailer full of other peoples' rubbish

from just over a 1km piece of road.

Atrocious and totally unnecessary! And what really sucks is that within 24 hours it all started appearing again!

Come on people, how hard is it to have an old shopping bag in your car to collect your crap? Do you not understand that whether you pay rates or rent, if you live in town there's a rubbish collection service that will take all that away for you every week? Hello... you have already paid for the service!

If you live rurally, collecting the rubbish from your vehicle will hardly make an impact on the household

trash you will eventually have to get rid of anyway. It makes even less sense to me that rural people would trash their own roads and be able to drive past it all every day with no second thought.

Then there are the increasing number of fly-tippers who are fouling our roadways with bags of household garbage. Do you really think you're going to save money by driving to some rural, out-of-the-way road to dump your stuff? Have you not noticed the price of fuel these days? You'd be better off all round by just doing the right thing and taking it to a transfer station because imagine how much more expensive it's going to

be when you get nabbed, by me or someone else, for littering!

In June, Council adopted a litter infringement policy which now allows fines to be issued to litterbugs. It gives every-day, concerned citizens like me the power to report you, the grublets, for littering. Awesome! I always keep a pen and some paper handy or have my cellphone ready to take note of people, places, license plate details and any other relevant information that will ensure you get at least a \$100 fine. For the bad, bad stuff the fine may even be as much as \$400!

So think twice litterbugs. Before you drop your pie

wrapper in the street, hurl your drink bottle out the window of your car or fling your bag of garbage onto the side of a road, think about all the sets of eyes and cellphone cameras that are around to catch you doing the deed. I don't dump my rubbish in your front yard, quit dumping yours in places that belong to all of us!

I'm now heading out our gate to pick up the rubbish some drop-kicks have tossed along our fenceline and put it in the bin... not that hard really is it? Rant over!

Cr Bonita Bigham

Coastal Welders 027 255 8677
06 752 8138

AB in pit platforms and AB races.

Various designs available to suit your needs.

Call today

**We are a local company training local people.
Email us at coastalwelders@extra.co.nz
WAREA**

District value increases, but residential value drops

The capital value of South Taranaki has risen by 4% to \$8.6 billion according to the latest district wide rating valuation conducted by Quotable Value NZ.

However the increase was largely driven by the rural sector with dairy properties seeing an average 8.2% increase in value, while residential property values actually decreased by 3.6%.

South Taranaki District Council manager of corporate services, Phillippa Wilson, says it's important to remember that while rating values are based on market sales they are only a 'snapshot' of the market at a single point in time.

"Because real estate fluctuates over time a rating value can't be expected to represent the market value for an

extended period, which is

They are prepared on behalf of the Council by Quotable Value (QV) using a process called 'mass-appraisal'; a methodology used all over the world.

Basically, rating valuers consider relevant property sales from the area around the time of the valuation. A market trend is established and applied to similar properties in the area. The mass-appraisal process is also supported with a proportion of valuation assessments done on specific individual properties every year. The process for calculating rating values is then audited

and how they impact on your rates is complex.

"Just because your rating value may show a change, doesn't necessarily mean that your future rates will change proportionately. Rating values are just one component which is used to determine the share of the total rates that individual ratepayers need to pay and the total amount of rates collected does not change as a result of the total value of properties in the District," she says.

"Put simply, your rates will only be affected if your property value has increased or decreased by more than the average across the District."

Mrs Wilson says the new rating values will not be used for rating purposes until 1 July 2013 when the new financial year begins.

"If you think that your rating value is not accurate, you should object. You can object online at www.qv.co.nz or call Quotable Value on 0800 787 284 to get an objection form. The last day for objections in South Taranaki is 20 December 2012. If you have any other questions call the Council's finance department on 0800 111 323," she says.



Manaia - residential values drop

extended period, which is why the district is re-valued every three years," she says.

The latest rating values, which South Taranaki property owners received in the mail last week, reflect the value of their property (excluding chattels) as at 1 Sep-

tember 2012. Phillippa Wilson says the calculation of rating values

by the Office of the Valuer General, an independent authority which is part of Land Information NZ. Rigorous quality standards must be met before a revaluation is confirmed.



Breastfeeding Welcome Here project recognises places in our community that offer supportive environments for breastfeeding.

Look out for this sticker on the window

breastfeed
me hoki ki te ūkaipō
BREASTFEEDING WELCOME HERE

or go to www.tdhub.org.nz
Breastfeeding page for more info



TARANAKI DISTRICT HEALTH BOARD



Cowshed Power Issues? Upset Cows?

We have the solution for:

Load Imbalance | Harmonic Distortion | Data Logging

Proven Scientific Results | Low / High Voltage

The Smart Position on Stray Voltage



KEEGAN For All Your Cowshed Electrical Needs,
ELECTRICAL Call Ann on 06-765-5290

BBC (Bible Believers Corner)

continued from page 2

Most Muslims we met in late October were friendly, open, willing to share their hopes and aspirations. So too were the religious Jews we met. Most Jews, we found, were not religious, and they were nice people too. Is it just the politicians, religious leaders and a few fanatics who are mad? They seem to be given credence by a biased press. Syrian leadership, on Israel's northeast border, is more obviously mad, its government is killing its own people.

About 25% of Israelis are Arabs. They have chosen to have Israeli passports. This gives them the same voting rights and the same obligation to serve in the army as any other Israeli. Several Arab MPs have been voted into the Knesset. The better quality of life for Arabs in Israel is obvious when crossing the border to an Arab country

such as Jordan. Houses, vehicles, tend to be older and not as well kept as those in Israel.

One immediate difference our tour group noticed was the scruffy litter strewn streets, and, more practically, the standard of public toilets. There was no toilet paper available in Jordan: simple, but basic, differences.

We were able to visit Biblical sites in Samaria, Galilee, Jordan, the Dead Sea and Jerusalem without any real problem. This is a profitable tourist business for both Israelis and Arabs.

We looked down from Mount Carmel, the mountain of Elijah, to the vast valley of Jezreel, better known as Armageddon. In the middle distance two Israeli fighters took off climbing fast on afterburners. Our Israeli guide simply said, "That is the

sound of Freedom."

On the Temple Mount in Jerusalem we had pointed out some massive timber beams nearly covered by tarpaulins. These beams had been dated and were old, very old. Some were the cedars of Lebanon used in Solomon's temple about 3,000 years ago. A week after our visit the Arabs burnt them.

The Golan Heights look north into Lebanon and Syria. Once an artillery site for the Syrian Army to fire into Galilee it was now pretty peaceful, but a mortar shell from Syria hit that area a fortnight after we were there.

Tel Aviv is like any other Mediterranean city, full of bars, nightclubs and entertainment; but Jerusalem is different. The old city has the Jewish, Armenian, Christian and Muslim quarters, each with its own life and cus-

toms. Outside those ancient city walls is the larger Jerusalem with mixtures of these and many other cultures. We were near Ben Yahuda Street where, near the City Centre, Christian singers competed with Orthodox Jewish electric guitarists, an Arab flame dancer and other buskers for attention.

I was asked how I felt in Israel. Were there special

places and feelings? Yes there were. Tel Aviv could be any city, but I felt at ease, at home, in Jerusalem. Shiloh where Hannah prayed for a son and that son Samuel served in the Tabernacle was special, as was the place in the tunnel under the Temple Mount next to the wall of the Holy of Holies. Jewish women pray there for the restoration or building of the Third

Temple. They believe that just beyond that wall, hidden in a special stone chamber is the 3,500 year old Ark of the Covenant, the central object of Jewish worship. I'm inclined to believe they are right.

This place is the centre of history, current world events, and the future.

Richard Oliver



The Wailing Wall in the old quarter of East Jerusalem in Israel. Photograph: Richard Oliver.

A Fantastic Christmas Gift Idea!

From Hardy's Health Centre City

Fruit and Nut Trays

At Hardy's we make the Fruit and Nut Trays using the Freshest Ingredients

Made to Order Trays from \$12

Available with Sugarfree Carob - suitable for Diabetics

We Deliver

HARDY'S HEALTH STORES
We keep you healthy

Ph: 06 758 7553
Centre City Shopping Centre

NEW GENERATION BUILDINGS

CALL TOLL FREE NATIONWIDE
0800 549 477

Visit our website:
www.kiwispnz.co.nz

GARAGES, WORKSHOPS, FARM BUILDINGS, INDUSTRIAL BUILDINGS

CUSTOMISED TO SUIT YOUR REQUIREMENTS

Contact your local dealer
JOEL SCHRADER

06 278 7267 or 0274 955 779

329 Waihi Road, Hawera

Just two OCNs left this year; December 13 and December 20. Don't leave your Christmas messages until it's too late.

Thinking of you

Electrolux

One Brand, Total Home Cleaning.

Electrolux Jetmaxx Vacuum ZJM6840

- High speed dust removal
- Unique air basket
- Dust magnet floor tool
- Washable HEPA H12 filter
- Turbo pet hair nozzle

\$269⁹⁹

Electrolux UltraSilencer Green Vacuum ZUSG3901

- Washable HEPA H13 filter
- Made from 55% recycled plastic
- Up to 90% of the vacuum can be recycled
- 12 metre cleaning reach
- Advanced Aero Pro Nozzle system

\$399⁹⁹

Congratulations to Betta Electrical Prize Bonanza winner Samantha Haden

PROUDLY NEW ZEALAND OWNED & OPERATED

Betta ELECTRICAL

MORRIS & OCKHUYSEN
31 Tamam Street, Opunake
Phone: (06) 741 8047

www.bettaelectrical.co.nz

Electrolux Panasonic dyson BIRMAKO Haier FISHERS PAYKOL BOSCH LG

Meads Motorcycle Service

9 Main South Road Manaia

Ph 06 274 8216 Mobile 027 2104673



For all Your Farm Bike Needs

Eltham Barbers

9.00am to 5.00pm
Monday to Friday
Mens and Ladies
No appointment needed

NOW OPEN SATURDAY'S 9.30-1PM

38 Bridge Street, Eltham
027 282 6322

Segment of Opunake Walkway Completed



Left: Rex Langton is pictured in front of one of the master signs which indicate where you are on the walkway and where other points of interest are. Also in the shot are students from Opunake High School, Mayor Ross Dunlop (in the hat), next to Sharon Arlidge Chairperson of the Egmont Plains Community Board. Jack Davy is also in the picture.

About 50 people gathered at the cenotaph to enjoy a short segment of the recently completed walkway, the project being a partnership between the Opunake Lions Club and the South Taranaki District Council. The walkway, which includes the Dudley Morris Bridge, has been resurfaced and fenced and

some areas will be replanted next year. Most of the work was done by the Opunake Lions co-ordinated by Rex Langton.

Along this stretch of walkway there were three signs from the newly completed Heritage Walkway Series of 10 signs. There are also four master signs on the walkway showing

where the heritage signs are located in relation to where you are currently in Opunake. These master signs are positioned at the Lake, Lions lookout at the Northern Heads (pictured), the entrance to the Cemetery and the Opunake LibraryPlus.

Everyone who attended the celebration went on to

enjoy a lovely cup of tea and afternoon tea at the Sandfords Event Centre.

Although there have been lots of people involved with the project, Rex Langton was awarded a special medal by the Mayor to acknowledge the massive contribution he has made to the Opunake Walkway project.

CREATIVE STONE

Our website has over 150 Memorials pictured on the gallery pages to give you plenty of ideas for the Monument you require.

Sea Grey Adults upright Stone & Base
\$1250.00 Inc GST - Conditions Apply

Restoration work available on request
All our memorials come with competitive pricing and friendly personal service.

Open 12pm-4pm Tuesday to Thursday 11am-3pm Friday

www.creativestone.co.nz

567 Devon St West
Blagdon Shopping Centre

Ph 06 751 2177



RENTAL VEHICLES



• CHARTER BUSES

• VANS

• TOUR BUSES

ALUMINIUM SCAFFOLDING FOR HIRE

\$35 per day, \$50 weekend.

More than 6 days \$30 per day.

WATERBLASTER FOR HIRE

Petrol 3000 psi 15L/minC

Cost: Half day \$90, Full day \$120, Weekend \$130. Friday after 3pm return Monday 9am.

Bond for waterblaster and scaffolding \$50.

For more information contact Tracey or Christine at

PICKERING MOTORS

11 TENNYSON ST OPUNAKE PH (06) 761-8363
0800 22 11 20 Email: pickering.motors@xtra.co.nz

Fire Brigade News - Opunake



Hi everyone

I hope you are all enjoying the warmer weather and longer days. With the holidays fast approaching I think it's a timely reminder to get your car check before heading away.

Please drive to the conditions and drive safely. With

the ever increasing risk of scrub fires in our rural area, please make sure that the blue rapid numbers are easily seen as we don't know everyone. To all of the local farmers please check the tractors for birds' nests as these do burn.

Callouts:

On October 20 we were called to a MVA on Oeo Road where a driver lost control.

On the 26th of October we were called out to a tractor fire on Namu Road.

On November 3 we were called to an MVA on the main road where the male

driver was lucky to walk away with only minor injuries.

On November 3 we were called to a fatal motorbike accident by the Opua road.

On November 3 we were called to a fully involved house fire in Rahotu.

Cheers Publicity Officer

A word of advice - Buying for the littlies



Be careful what you buy for tots

The silly season is about to explode. When buying for your little elf, it's important to think about safety. A lot of children's toys aren't dangerous all by themselves. It's more how your child might use them. The younger they are the more careful you need to be.

The main things to look out for

are:

Size: Make sure the toy is too big for your child's mouth and that the toy can't break down into smaller pieces.

Surface: Watch out for any bits and pieces that can come off like sparkles, buttons, knobs or even stuffing that could come out. Young children are notorious for putting everything in their mouths, and you don't want to risk them choking. Steer clear of toys with sharp or rough edges that could pierce their skin. And make sure battery covers are secured

with a screw so children can't get them out. Button batteries can be particularly harmful if swallowed, as can magnets.

Sound: Believe it or not, beeping and banging toys can damage your child's hearing. Protect their ears - and your sanity - by going for toys that are no louder than a normal conversation.

Strings: Yo-yos and anything with a cord or string are best kept for older children. Younger children can get tangled up in them, risking cutting off their blood supply, or even worse, strangulation.

Space: If the toy needs to be used outside, make sure your child will have enough room to use it safely.

Supervision: Some toys need to be supervised. Avoid these if you want to be getting on with other things while they're playing with them. And remember, children should be watched at all times around water.

B & R Barron BUILDER



2475 Surf Highway 45 OKATO

PH/FAX 06 752 4044 MOBILE 0274 448106

Email: barronz@xtra.co.nz

- Houses
- Alternations
- Decks
- Bathrooms
- Kitchens
- Roofing
- Fences
- Concrete
- Cowsheds
- Farm Buildings.

INGRAMS

Contracting LTD

PERMANENT HIRE BINS



LOCALLY OWNED AND OPERATED

• Ph (06) 278-4786 • 027 4458 701 • A/Hrs (06) 278-7063

Collins Street • Hawera

Garden visit increase for 25th Powerco Taranaki Garden Spectacular

Increased public interest in the 25th annual Powerco Taranaki Garden Spectacular meant there were nearly 2000 more garden visits recorded for the 2012 event compared to last year. The 10-day festival running from October 26 to November 4 enjoyed sunny spring weather except for two days of rain and wind – and even then the visitors kept coming according to Armstrong Garden owner Althea Armstrong. “Our visitor numbers are well up on last year with a good balance of out-of-town visitors to local visitors,” says Mrs Armstrong. “Even on the first Satur-

day when it was windy and rainy – they were still coming to visit the garden!” Garden visit numbers for 2012 were nearly 54,000 compared to nearly 52,000 for 2011, which is a fantastic visitor number in a struggling economy, says Festival Manager, Lisa Ekdahl. “As well as having 51 premier gardens in our line up, we put a lot of effort into creating great events for visitors to celebrate our 25th year,” says Lisa Ekdahl. “The Frocks on Bikes, Spring Fashion, Secret Dining or guest speaker events were either sold out or very

well patronised. What really captured people’s imagination was the Peranakan Lights installation at Pukekura Park. We estimate thousands of people, especially families, visited this magical light display.” Supported with funding from the TSB Community Trust, and by power generation companies and a transport company, the Lights were inflated, illuminated shapes screen printed with designs of traditional Peranakan art from South East Asia - renowned for its rich and opulent designs in ceramics, embroidery, screen-printing and architecture. Festival organisers estimate

approximately 75% of visitors to the Garden Spectacular were from out of town – backed up by Taranaki Motel Association spokesperson, Deborah Tawa. “The association’s members have seen a noticeable increase in visitor numbers to the Festival over the last two to three years,” says Deborah who is involved with several motels. “It was a great festival this year for visitor numbers – and kind weather always makes a difference!” Tour groups hit a record this year bringing nearly 250 visitors to the region from as far afield as Australia says Lisa Ekdahl.

“Each year, we aim to live up to being New Zealand’s premier garden experience,” says Lisa Ekdahl. “Already we are assessing some great new gardens for the 2013 event so we will continue to offer garden lovers new and inspiring gardens to experience.” For more information, visit www.gardenfestnz.co.nz or enquiries@gardenfestnz.co.nz or call 00 64 06 759 8412



Over 54,000 visited the gardens of Taranaki during the Powerco Garden Spectacular

WEST COAST REGIONAL GARDEN SAFARI

The first event in the newly formed West Coast North Island WI Regional area saw South Taranaki and Wanganui on a garden safari which had been organized by South Tarana-

ki WI Federation. President Phyllis Malcolm welcomed 100 members to the day and five exquisite gardens were visited in the Manaia, Kapuni and Pihama area – they were all just mag-

nificent, and each of them were very different with their own special features. Members also enjoyed a time of mix and mingle over Devonshire morning tea and a lovely lunch prepared by the local ex-

ecutive - which capped off an exceptional day. Members also generously supported a raffle on the day with the proceeds going to our National Project ‘Kidney Kids NZ Inc’.

Everlasting Memories and Anderson Monumentalists have joined forces to bring you unbeatable service in headstones and now trade together under our new name,

Headstone Warehouse



268 Devon St East NP, 06 75 999 75
Cnr Collins & High Sts, Hawera, 06 278 5518
www.headstonewarehouse.co.nz

BROPHY BUILDERS

For new homes, roofing, alterations, kitchens, decks and all farm buildings.

For all your building requirements phone Phil

6190 South Road, RD 35, Pungarehu
027 236 7129 or (06) 763-8777 a/h

TO
ADVERTISE HERE
PHONE
06 761 7016

TRAILERS ...



For all your
STRUCTURAL STEEL & PIPEWORK
contact
Richard at

HOLLARD ENGINEERING 1979

ATTENTION FARMERS
We do puncture repairs
(R P & E M Bartley - Proprietors)
16 Victoria Street, Kaponga
Ph (06) 764-6686 Fax 764-6685 a/h (06) 764-6432

Clegg's Funeral Services & Monumentalists

'Serving all districts'




Mike Clegg MOB: 027 496 9090
Susan Clegg MOB: 027 441 7039
Andrew Blanche MOB: 027 496 9045

Office - 24 hrs (06) 278 8088

TO
ADVERTISE
HERE
PHONE
06 761 7016

Accident & Medical Clinic



Clinic hours 8am-8pm
No appointment needed
24 hr urgent medical care
X-ray
Pharmacy

OPEN EVERY DAY

Richmond Centre
8 Egmont St New Plymouth Ph(06) 759 8915

by the wind wand
ACC and RNZCGP Accredited

Leatherby Builders



- New Homes/Renovations
- Decks/Fences
- Concrete Work
- Bathrooms/Kitchens
- Alterations
- Free quotes

Call Corey
027 778 0869
or Emma
027 487 1403
Email: weta.emma@gmail.com
57b Anglers Ave, Warea

SHOE & BOOT SALES



Also
SHOE, BAG & LEATHER REPAIRS
by SCARPAS David Deacon

Childrens
school
sandals
now
available

244 Broadway, Stratford
Phone: (06) 765 5591
Fax: (06) 765 5594

New Zealanders' satisfaction with public services continues to increase



Jonathan Young,
New Plymouth MP

National campaigned on delivering better public services to all New Zealanders – and almost nine months since Prime Minister John Key announced the Better Public Services package for our state sector, we are delivering on that

promise.

New Zealand's public sector scored 74 in the latest Kiwis Count survey, which measures New Zealanders' satisfaction with core public services like health and education – an increase on the June score of 72.

This is an increase of seven points since National took office – the last score under Labour was 67 back in 2007. This most recent survey saw increased satisfaction scores for services in Social Assistance and Housing, and Education and Training – recording increased scores of two points over the previous quarter.

The improvement in people's overall satisfaction with public services is an excellent result considering the fiscal restraints under which the Government has contin-

ued to operate since the last survey was released. The results show that, contrary to the arguments of the Opposition, a focused Government can deliver better public services without massive increases in spending.

But there is more work to be done.

This year we outlined 10 challenging results and their related targets to get further traction on difficult issues such as reducing crime, reducing long-term welfare dependency, and reducing educational underachievement. Some of these targets are very aspirational – in fact, some of them will be extremely difficult and demanding to achieve.

We make no apology for this.

Over the next five years we

aim to reduce the number of people on working-age benefit for more than 12 months by 30 per cent, or more than 20,000 people; reduce the incidence of rheumatic fever by two-thirds; and reduce the violent crime rate by 20 per cent.

New Zealand has a very committed and able public service. The responses to events such as the Canterbury earthquakes have shown our public service at its very best.

Delivering better public services within tight financial constraints is one of the National-led Government's key priorities for this term.

That's why we have set specific targets, and we expect to get results, as part of our plan to build a brighter future for you and your family.

Chester Borrows

MP FOR WHANGANUI

Hawera Office

44 Victoria Street

Ph: 06 278 4059

chester.hawera@parliament.govt.nz



Reflections on a year in Parliament: It basically works



Andrew Little, List MP

at recent media coverage you'd think that's just the Labour caucus.

One of the refreshing discoveries of life in Parliament is that there is a lot more constructive discussion than is given credit for.

The debating chamber is given over to the more ritualistic exchanges. Differences in policy between the parties are expressed and debated, although occasionally the differences are exaggerated just to underline that there is a difference, even if it is slight.

Of course, there are times when the differences are pronounced and real. Legislation like that for selling off parts of our state-owned enterprises highlight very real differences between the government and opposition parties on economic management.

The government's view is

that cashing up these businesses, even while keeping a bare majority, will help with the country's finances today. The opposition parties think that realising cash today should not be traded off against longer term benefits.

Debate in Parliament can go from the deeply divided and principled discussions, which can get personal and fractious, to debate on issues that show the House at its best. One of the debates this year that achieved this, in my view, was over Louisa Wall's marriage equality Bill.

This was a conscience issue so MPs were free to express views reflecting their own and their constituents' positions. Party lines didn't come into it. The contributions from all sides were thoughtful and respectful.

One of the more satisfying parts of the MP's job is the

work done in select committees. These committees are the small groups of MPs from all sides of the House who meet to give in depth consideration to legislation as well as to look closely at financial allocations to government departments and to decide on what to do with the many petitions received from citizens.

Although it is true that contentious legislation can divide a committee as acutely as the debating chamber, mostly the discussions in the committees are constructive and useful. It is usually possible to persuade the government of the day to make some changes, even if it is legislation you are opposed to as a matter of principle.

Our Parliamentary system may not be perfect, but there is plenty going for it to truly reflect the diversity of views and act as a brake on the government of the day.

LAWYERS Thomson O'Neil & Co.

Our Opunake Office is attended by:

Robert England on Wednesday and Fridays, for buying and selling Houses, Farms and Businesses; Trusts; Wills and Estates.

Neal Harding on Thursday, for Residential Sales and Purchases; Family, District, and Criminal Court matters; Civil and Business matters.

FOR ALL YOUR LEGAL REQUIREMENTS

30 Tasman Street,
Opunake
Ph: 761-8823

Badges for 50 and 60 years WI service

At a recent Fun and Friendship day of South Taranaki Federation of WI held at Ka-

puni, the following members were presented with their 50 year service badges by Gold Honours Member Val Elia-

son: Patricia Malone Turuturu WI, Fiona Collins, Margaret Watts and Marie Frandsen Kaponga WI.

Marie Rye – Rawhitiroa WI

was unable to be present, but will receive her 60 year service badge.

Phyllis Malcolm, South Taranaki President, congratulated these members for their long service and for the work they had done for WI over these years – she said it really was a great achieve-

ment.

Annette Perrett from Corrections Dept was guest speaker, and children from the Manaia Primary School Ukulele Group entertained in the afternoon much to the delight of all present.

Mobility expo a success

People with mobility scooters and their support people attended a Mobility Scooter Expo held in Opunake recently, which was suggested by the Egmont Plains Community Board after they'd heard concerns about the safety of people using mobility scooters in the area. The South Taranaki District Council funded the expo which was also supported by

five scooter suppliers from around Taranaki.

The expo focussed on safety and this message was presented by Opunake's Constable Nigel Dey. Nigel gave key safety advice before getting all attendees to show off their mobility scooting skills by participating in an obstacle course set up in the Sandfords Event Centre stadium.

Results were mixed as some

nudged the walls while backing into the 'garage', but luckily as these were construction cones no damage was reported.

Lunch catered by SECO was enjoyed by everyone and all participants received a prize. Taranaki Disability Information also came for the expo. "Everyone took home good safety information and if we can make even one person safer then it is a good result," said Nigel Dey after the event.

For advertising phone (06) 761 7016

EQUINE SERVICES AND TRAINING FACILITY

WHERE WE FIX BROKEN HORSES

DAVID STEWART
HORSE WRANGLER AND NATURAL FARRIER

SPECIALISING IN

- FLOAT LOADING
- FIRST CONTACT HANDLING
- BEHAVIOURAL PROBLEMS
- NATURAL HORSEMAN SHIP LESSONS
- CORRECTIVE TRIMMING
- RIDING LESSONS

60 WELD ROAD
OAKURA

027 629 5056
a/h 06 752 7454

New managers find a hidden gem



From left are Alice Thompson, Ethan Church, Dean Marden, Karyn Marden and Bailey Church.

Next month the (relatively) new managers of Opunake Beach Kiwi Holiday Park will notch up six months in their position, which is in association with the owners Craig and Jenny Russell, who they are really enjoying working with. Karyn and Dean Marden are loving their job and its location. The family includes their children Bailey Church

and Sofia Marden. Ethan is visiting for a while with his friend Alice. "Such a beautiful outlook", says Karyn. She adds, "It's such an ideal camp" and goes on to say it compares very favourably with other holiday camps she has seen in different parts of New Zealand. Dean is equally enthusiastic.

"I love it - it's great. It's a nice place to be". He adds, "It's a hidden gem". The couple's last position was at the Golden Bay Holiday in Tukurua at the top of the South Island. However, as most of their family are currently in the North Island, and they spent their formative years here, it made sense to head north. Two serious floods in quick succession

probably hastened their decision to shift. Bailey, the couple's daughter will be having a major role in running the holiday programme which starts about December 26. Planned are such delights as face painting, ice cream sculpturing and Project Runway - fashion with a difference. This was a success at their last place. "It was such a blast when held last year", says Karyn. Karyn and Dean are looking forward to becoming more involved in the community. One side of Opunake they have had a bit to do with are the schools in the township and they are impressed. They describe Opunake Primary School as being "absolutely fantastic" for their six-year-old. A guided tour revealed an immaculate holiday park, both inside and out. The laundry is modern and very well-equipped, as is the kitchen block. The ablution blocks are spacious with nappy changing stations and wheelchair access. The TV lounge has Freeview screen as well as computers with wireless. There are two gas barbecues. Cabins are tidy, well maintained and well

equipped. They are looking forward to the busy Christmas holiday season, but are under no illusions that there may be challenges. "We are pretty well equipped to deal with all things that come our way", they point out. Meanwhile they are keen for the community to get a clear idea as to what the holiday camp has to offer. "We

welcome the community to come and look and see what an asset it is. We are happy to show people around". There is also an excellent Guest Information handbook which is wide ranging in its scope. Karyn and Dean have gone to considerable lengths to make it as informative as they can. It includes, not just the camp, but also facilities and shops in the township.

Opening Hours in December

Saturday's	9am - 3pm
Sunday's	11am - 3pm
Friday 7th	9am - 8pm
Thursday 20th	9am - 7pm
Friday 21st	9am - 7pm
Monday 24th	9am - Late

Father Christmas in Store
Friday 14th 2pm - 4pm
free balloons & Teddys to give away

Pastimes

87 Tasman St, Opunake • Ph (06) 761-8151

Sunbeds on skid row

As part of the Sunbed Action Group the Cancer Society is delighted by the private member's bill: Health (Skin Cancer and Trauma Prevention) Amendment put forward by Dr Paul Hutchison MP and Health Select Chair. "We have worked long and hard to highlight that exposure to UVR from sunbed use is not only unnecessary but dangerous," said Health Promotion Manager, Dr Jan Pearson. "We support Dr Hutchison's initiative to protect New Zealand consumers from unnecessary sunbed danger - especially our impressionable youth. The latest Consumer NZ mystery shopper sunbed survey, published in September 2012, has again shown that many sunbed operators are not complying with their current voluntary standard. Dr Hutchison's bill, when passed, will ensure those who provide sunbed services are licensed and regulated. Licensing and regulating the providers will give

consumers some assurance that the service they are paying for has some safeguards." Every year over 300 New Zealanders die from Melanoma - the most deadly form of skin cancer. Skin cancer is New Zealand's most common cancer. "Tightening up the way sunbed operators work is one step we can take to reduce our high skin cancer rates and reduce the cost to our health system. We applaud the New South Wales announcement in February 2012 to ban sunbeds, commencing in 2015," added

Dr Pearson. The introduction of the new law will ensure:

- Those under 18 and those with very fair skin will not be allowed to use a sunbed
- All consumers will be fully informed of the risks (although no sunbeds are safe from risk)
- All sunbeds will be operated by someone who is a licensed provider who adheres to all the safety requirements.

"The time to regulate providers of sunbed and other associated services has come."

Taranaki wide sales, hire and service.
Free delivery, competitive prices.

MOBILITY SCOOTERS
and all living aids - we'll help you with whatever you need.

Kevin & Marilyn Bromell
279 Broadway Stratford
Ph (06) 765-7633
Freephone 0800 765 763
www.mobilityandmore.co.nz

You give Magnesium to us - do you take it?

We Deliver

It's Lacking in our Soil

Symptoms of magnesium deficiency are muscle cramps or twitches, problems with sleeping, tiredness, muscle pain, headaches, bowel problems, difficulties with the heart, body tension, nervousness and irritability to name a few. Magnesium oxide causes loose bowel motions, if you aren't suffering from constipation take one with out. Magnesium ultra is bonded onto a protein molecule so it doesn't cause loose bowel motions.

HARDY'S

HEALTH STORES

We keep you healthy™

Centre City Shopping Centre Ph: 06 758 7553

The next issue of the Opunake & Coastal News is on December 13



Why buy it, when you can Hire it.

348 South Rd Hawera,
Ph: 06 278 7974, Mob: 0274 452 207
E: storage.equipment.hire@xtra.co.nz



MEEGAN'S COLUMN

The hidden language of your dreams

Meegan Care

Ever wake up in the morning and remember a dream so vividly that you can recall it in detail? And did you ever find yourself pondering on that dream, feeling like there was some important meaning within the dream that you just can't put your finger on?

Here's 5 tips to help you decode the language of your dreams.

1. Record it. Write your dreams down. You may keep a journal by your bed to record your dream as soon as you wake. After writing your dream down, read through it again.

2. Notice the emotion. What are the overall feelings you are having towards the

dream. Also notice the different emotions experienced within the dream, towards events, people, places, symbols.

3. Don't take it too literally. Dreams speak in symbol and metaphor. When attempting to more fully understand a significant, recurring dream or series of dreams allow your mind flexibility. Hold open to what the symbol reminds you of, what emotions and responses it invokes in you. In fact, a helpful way to deepen into the meaning of a dream is to write or draw about just one significant symbol within the dream.

4. Put yourself in the other's shoes. Significant

symbol in your dream that you just can't understand? It is suggested that symbols within your dream actually represents an aspect of your psyche. Imagine you are that symbol, be it a cat, a river or a lover. Within the context of the dream, how does that symbol (ie. cat, river, lover) feel about you the dreamer and what part of you might it represent?

5. Hold that dream dictionary lightly. Experts don't agree on the meaning of dream symbols, so the use of a dream dictionary to interpret your dream is best used as an aid to open your imagination to the dream's unique meaning for you.

"It is the dreamer himself who should tell us what his dream means." Sigmund Freud

Meegan Care is a qualified counsellor with a holistic perspective, experienced at working with a wide range of life issues, including stress, anxiety, depression and physical issues. She specialises in fast acting solutions that free you from pain and "that stuck place", enabling you to move forward in your life with empowerment and joy. To find out more go to www.meegancare.co.nz

For all inquiries email info@meegancare.co.nz, phone 0800THERAPY (0800 843 727)

Oakura business changes hands



Hadden Ryan (right) and Paul Rowe.

Oakura Automotive, formerly Oakura Panel and Paint, has recently changed hands. The business has been bought by Hadden Ryan. A qualified mechanic, Hadden has worked in the automotive industry for

the last 20 years, chiefly in Taranaki.

His first time owning his own business, Hadden says "he's enjoying it." One of the attractions was the location, he says. Oakura is semi-rural and still close to town for

parts. He has retained the same staff in Paul Rowe who has worked for the previous owner in the panel beating side.

Hadden says he's hoping to develop the automotive side of the business and has added extra hoists and "top of the range tyre gear" and is certified to do warrants

includes all automotive serving and repairs, farm bike - both two and four wheeler - servicing and repairs. Also light truck COF work and servicing. His investment in new tyre equipment means, "We can now do very competitive prices on all tyres including quad bike and two wheeler tyres," says Hadden.

They do warrants of fitness.

Oakura Automotive is also continuing with the panel work and the hire service. Hadden says he has recently added to the range of hire equipment buying two trenchers, one ideal for small areas laying electrical cable and a longer trencher for doing long runs and up to a metre deep.

"If there's a demand for other items I'll consider getting them in," says Hadden.

Oakura Automotive on the hill just north of Oakura town ship is open weekdays from 8am till 5pm and on Saturday mornings for the hire gear.

For advertising phone (06) 761 7016

FAIRVIEW
WINDOWS & DOORS HAWERA

Full Replacements
Conservatories
Inserts

WAYNE JONES
(06) 278 8991
e: jones.fairview@xtra.co.nz
w: www.fairviewhawera.co.nz
159 Princes Street, Hawera

FAIRVIEW
WINDOWS & DOORS HAWERA

OAKURA AUTOMOTIVE
2012 LIMITED
PANEL REPAIRS • MECHANICAL SERVICES • HIRE CENTRE

UNDER NEW OWNERSHIP

- Automotive Repairs & Servicing
- Farmbike Repairs And Servicing
- Full Panelbeating Service
 - Can Arrange Top Quality Paint Work

Hirage Of:

- 4 Metre Scaffolding • Generator • Post Hole Borer
- Car Trailer • Hedge Trimmers • Rotary Hoe • Chainsaws
- Horse Float • Scrub Cutters • Concrete Cutter
- 4 Metre Ladders • Trailer Mulcher • Concrete Equipment
- Lawnboys • Tandem Trailer • Kelly Float • Lawnmowers
- Trencher {Small} • Concrete Mixer • Plasma Cutter
- Trencher {Large} • Drop Saw • Plate Compactor
- Waterblaster • Gas Spit • Pole Trowels • Woodsplitter

Increasing stock constantly, please ring if you have a product query

Open: 8am To 5pm Mon - Fri
Sat 9am To 12 Noon (for hirage)

1 Victoria Road, Oakura
Opp Corbett Park Ph: 06 752 7485

BRIAN HILL
BD HILL BUILDING

- *New homes
- *Alterations
- *Rotary cowsheds
- *Herringbone dairy sheds
- *Concrete driveways
- *Bridges
- *Pre-cast silage pits
- *Hay barns & implement sheds
- *Concrete races
- *Repair work

We are a licensed building practitioner and Master Builders member. Experienced in the design and consent process.

0274 442 703

ALUMINIUM JOINERY

Rylock

- Windows
- Bi-Folds
- Sliding Doors
- Entrance Doors
- Conservatories
- Garage Doors
- Inserts/Retro Fitting
- Double Glazing Existing Joinery
- Maintenance

Call today for a free measure and quote

IN YOUR AREA EVERY WEEK
Ph: (06) 758 8073
Fax (06) 758 4157
email: sales@rylocknp.co.nz
Web: www.rylock.co.nz

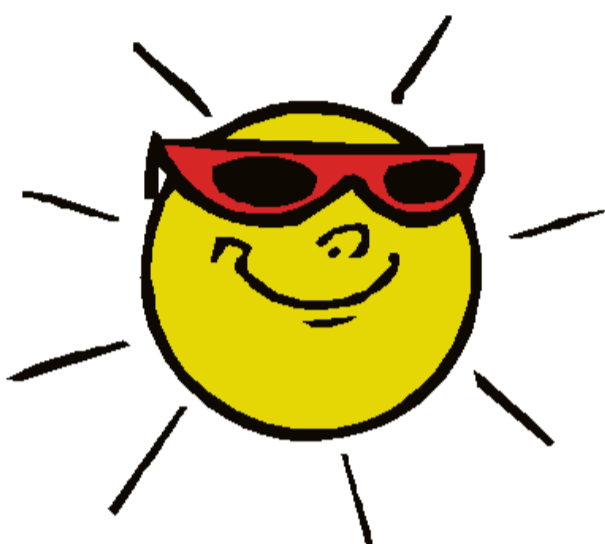
Thanks for supporting us Coastal Taranaki people!

As it is our 1st anniversary for Oakura Pharmacy and Opunake Coastal pharmacy has just opened -

Both Opunake Coastal pharmacy & Oakura Pharmacy are having specials!

Specials run until the End of December!!

Summer is just around corner!



All sun blocks 20% off

Nutra -Life Fish Oil 1500mg and Fish Oil 1500mg with D3 are special! Was \$39.99 (180 caps) each but now ONE for \$22.50 and TWO for only \$40.00

Black-Ice sunglasses and Reading Glasses 30% off

Passport Photo service will be available from Dec!!!

Thomson's Vitamin C 500mg (200 tabs) and 1000mg (150 tabs) 50% off

Christmas Gift ranges are in store!!



OPUNAKE COASTAL PHARMACY
Your coastal community pharmacy
55 Tasman St. Opunake
Opening Hours
Mon-Fri : 8:30am – 5:30pm
Sat: 10:00am-2:00pm
Phone: 06 761 8599



Oakura Pharmacy
your coastal community pharmacy
1132 Main South Road, Oakura
Opening Hours
Mon-Fri: 8:30am – 5:30pm
Sat: 10:00am – 1:00pm
Phone: 06 752 7557

We try to give more discounts to you by buying more stock for our two stores - Thanks again for supporting us!!

Record weight loss for winner of weight loss challenge

John Murphy lost a whopping 21.2 kilograms to win the Opunake Weight loss Challenge. John also holds the record for the highest percentage of weight loss in a weight loss challenge run by Sharron Skipper to date. As the biggest loser

he also collected \$599 in prize money.

Each person lost 6.75kg on average and collectively, the 29 who finished the challenge, lost 195.5kg.

It is the fifth Weight loss challenge Sharron has organised.

"Losing the extra weight you have been carrying will bring down your body fat, increase your metabolism and energy and most importantly your BMI (body mass index) will have gone down, Sharron told the group at their final meeting.

"By doing all this you have given yourself a stronger heart and better all health."

If you have taken on board all the topics we have covered over the last 9 weeks you will definitely, if not already, noticed a lifestyle change, she continued "because to lose weight and to maintain weight requires a lifestyle change especially if you are going to keep the weight off."

Forty people enrolled in the weight loss challenge nine

weeks ago and were split into two groups with Sharron taking one group and Claire Mclean the other.

Claire, herself a great advert for Sharron's weight loss courses, lost 30 kilos over 18 months. Originally 101.5 kilos, Claire is now 71kg. Her husband also lost 24 kilos.

Claire who next spoke congratulated those who'd stayed with the challenge and emphasised the importance of weight maintenance after the weight loss.

Each person was then invited to come up and collect a certificate recording their weight loss in kilograms and the centimetres lost and tell the others how they achieved their weight loss.

Star pupil John thanked Claire who he described as a great role model as he accepted his prize from her.

He holds the record for the most weight lost in the five weight loss challenges Sharron has held - two in Opunake and three in Okato.

He is the second male to also win the challenge.

After the presentations and the drawing of the raffle winner won by Karen Hill, there were spot prizes of Herbalife products that Sharron sells. Finally photos were taken of each participant which, along with the photos taken at the start of the course, were emailed to participants before everyone tucked into a healthy supper.

The next weight loss challenge will "probably be in Okato" early 2013. It costs \$49 to join, but there are no other charges unless of course you gain weight between weekly meetings when you get fined! If you miss a meeting you also have to pay \$5. The money accrued from the joining fees and fines goes to the winner of the weight loss challenge.

How he did it

John said he "weighed everything" and ate white meat and vegetables. He cut out his weekly fish and chips also stopped eating bread, cereals, pasta, rice, sugar and any food with sugar in it.

He later increased it to 10 kilometres a week running 4-5 times a week.

He was now "happier" he said and felt better. He also had "lots of self confidence", he added.

He lost over 2 kilograms each week.

His current weight was 97.6kg and he had an eventual target weight of 82kg. A farmer, John admitted to being "very single focussed on his goal of losing weight".

"There were no secrets, I just did what I was told to do," he said.

He also began by running 6km three times a week. It would take him 30 minutes each run.

Keeping You On The Road With Competitively Price
Led Lights, Trailer Lights, Beacons, Work Lamps, Solar Panels
Alternators, Starters and much, much more.....
Come In and See Us At
Stratford Auto Electrical
142 Broadway Stratford Ph 765 5824

Dairy or Support



OPEN DAY TUESDAYS 12.30 - 2pm

2790 Eltham Road, Te Kiri

48.5623 hectares (120 acres, more or less). Located in a strong farming district you can chose this small farms future direction while tapping its obvious further productive potential. Consider these salient features of the property:

- Large three bedroom home
- Excellent ancillary buildings
- Cold creek water scheme
- Wintering all cows and replacements
- 10 a/side h/bone cowshed
- Location and potential
- Consistent production
- Central race

Surely a great opportunity for a first farm buyer or as a support block to an existing dairy operation. The vendors are committed and our instructions are to apply our best efforts to achieving a sale.

To be auctioned on Friday 7th December 2012 11am at the Te Kiri Hall, Eltham Road.

Open Days Tuesday 13th, 20th & 27th November 2012 at 12.30 - 2pm.

Matthew & Co
REAL ESTATE LTD
Licensed under the Real Estate Agents Act 2008

Ph 765 5599 fax 06 765 5598
 Matthew 0274 814 648
 Mike 027 272 4044
 Nicole 027 355 650



John before...



...and after



John in profile before...



...after 9 weeks on the challenge

SANDFORDS RURAL CARRIERS

Rural & General Cartage
 Specialising in

- Palm Kernel
- Fertiliser
- Aggregate
- Hay & Silage Bales

Livestock Cartage
 Depots: Okato, Auroa, Hawera & Waitara

Readymix Concrete
 Depots: Hawera & Wiremu

Ground Spreading
 4WD Trucks spreadmark certified, GPS proof of placement.



0508 726 336 or 06 274 5852

SANDFORD LIMITED

We sell Garden Gift Cards
 Visit 'The Raised Eyebrow' Cafe

See Fairfield's Garden Centre
For Practical Gifts for Gardeners

Fruit Trees, Native Trees, Wolf Brand Tools, Niwashi Cultivators, Insect Eating Plants, Kneelers, Ceramic Pots, Electronic Tap Timers and so much more all awaits you at Fairfield's

Just down the road from Tupare Gardens

GOOD GROWTH IS GAINED FROM GREAT KNOWLEDGE

Corner Mangorei Rd & Junction Road New Plymouth
 Call us today on (06) 7588831
 open 7 days 8.30 to 5pm
 Your friendly 'Go Gardening' Centre





'Growing good people for a rapidly changing world'
 "He waihangatanga o te tangata pai i roto i tenei ao hurihuri"



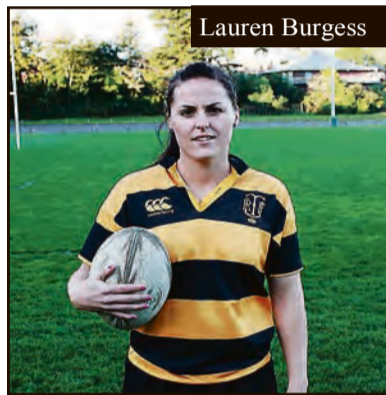
Nathan Hickey (Proxime Accesit) Breanna Morgan (DUX), Ethan Bloemen (Proxime Accesit)

Congratulations to **Breanna Morgan** who received the DUX award for 2012, along with joint Proxime Accesit **Nathan Hickey** and **Ethan Bloemen**. Breanna will be studying law at Victoria University next year. Nathan and Ethan both will attend Massey University to study Engineering.

Congratulations to **Jonathan Abplanalp** who gained a third place for the 15/16 years section in the New Zealand finals of Bright Sparks with his Volcano Alarm System.

Jenna Bellve and **Abbey Silson** were awarded a third place for the 13/14 years section with their RWS (Remote Weather Station). The three attended the 12th Annual Awards Ceremony in Wellington.

Teacher **Lauren Burgess** has been selected to represent New Zealand in the Womens Sevens Team. The squad of 12 leaves to play in Dubai for the series on 30 November to 1 December 2012. The series involves four locations. These are Houston Texas, Guangzhou China, Amsterdam, and the Rugby World Cup Sevens in Moscow in June 28-30 2013.



Lauren Burgess



Matt Lash

DAILY NEWS SPORTS AWARDS

Matt Lash along with the **Hillary Challenge Team** attended the Daily News Sports Awards held in New Plymouth on Friday 23 November. The team won the Junior Sportspeople's Team Award. Well done on another fine achievement!



HILLARY CHALLENGE 2012 TEAM

Back Row L-R: Kallum Whitehead, Daryl Read, Jordan Hooper
 2nd Row: Mrs Julie Morgan (Manager), Thomas Bell, Ethan Bloemen, Mr Matt Lash (Coach)
 Front Row: Tara Potter, Gemma Grey, Anna Young, Breanna Morgan

Community Farewell

DAVID NICHOLAS

7pm Friday
7 December 2012
in the School Hall

After 37 years at Opunake High School David Nicholas will be retiring at the end of this year. You are welcome to attend an evening to celebrate David's retirement on December 7th

JUNIOR PRIZEGIVING

Friday 7 December @
11:30am
In the school hall
ALL WELCOME

SAMOA SPORTING & CULTURAL TOUR

SAMOA TOUR EVENTS:
Scrap Metal
 We are collecting any scrap metal -Phone Phil Hooper on 7638511 if you wish to donate
Bale Sale
 We are looking for the donation of a hay bale to go towards a 'BALE SALE'. If you are able to donate a bale please call Mr Griggs on 027660862
Opunake Beach Carnival
 Look out for our sushi stall

XMAS AT THE RACES

THURSDAY 13 DECEMBER 2012 @ 7pm
Opunake High School Hall

\$15 ticket 8 Race Programme
1st Race starts at 7:30pm

2013 HILLARY CHALLENGE TEAM FUNDRAISER

Tickets available from Opunake High School Office



JUNIOR CAMPS 10, 11, 12 December

Junior camps take place in the last week of the term 10,11,12 December. All year 9 and 10 students must attend the junior camp programme which offers an exciting range of activities. These include: golf, paintballing, surfing, Waiheke Island, fishing, Tongaporuto, sport camp, trip to Wellington, northern adventures. Our students are extremely fortunate to be able to experience these kind of adventures.

SPECIAL DATES TERM 4

- December 7 Junior Prize Giving 11:30am
- December 7 Farewell David Nicholas 7pm
- December 10-12 Junior Camps



Proudly supporting the
Opunake community for
more than 30 years.

www.stos.co.nz



Opunake Market Day draws crowd

Opunake's Market Day was a great success with crowds turning out in big numbers to snap up pre-Christmas bargains. It was lovely weather and lots of community groups were capitalising on the opportunity to raise funds and the profile of their particular community group. Volunteers from Opunake St John with fully equipped ambulance open to view at hand, were hoping to interest people in volunteering. The next recruitment is in February. Adrienne Young who has been a voluntary member of Opunake St John for 9 years explained also that if you become a financial supporter you get much reduced fares

if you ever need the service. The Opunake St John currently has seven members. Ideally they need 14-15 which would allow two people per shift so that every 12 hour shift would be covered. One person drives, one does patient care they explained. "Otherwise it's a case of waiting for an ambulance from Hawera, Stratford or New Plymouth and they're not always available," said Lynda who has been a volunteer for 4-5 years. She described it as "extremely rewarding to be able to help people". She mentioned particularly "The older ones who are sick who need transport" as opposed to "those who are drunk or stupid" and also peo-

ple with young families. She said going to accidents raised your adrenaline but added they had very good support from the fire brigade. Adrienne agreed and added that in a small community there was always the chance of going to someone you know but "you've got to do your job". She mentioned she'd recently been called out to her grandchild. "You don't know what to expect."

BELOW
Candace Noyes from the Red Cross with the survey on Coastal transport.



Sue Pegrume (right) with Joe Edwards and Jonah Ackerman chat to volunteer ambulance volunteers at the Opunake market day last weekend



Sharon Hunt serves a hungry customer at the Coastal Cobras stall at the Opunake Market Day

SPREADING
FBT
LIMITED



- Spreadmark certified
- Experienced operators
- GPS Mapping for proof of placement

ONE CALL ORDERING

BULK DELIVERIES



- Stock Food
- Bulk Bins or Silos
- Metal and Race Fines
- Fertiliser & Lime
- Grass & Maize Silage
- Hay
- Log Cartage



06 752 4124 Okato (Dermott Lane)

or 06 761 7341 Opunake

www.fbt.co.nz

FBT 0800 432 866

See us for your...

- Feed Pads
- Chicken Sheds
- Rotary Sheds
- Farm Buildings
- Silage Pits
- Housing
- Alterations & Additions
- All concrete works
- Paths & Driveways



Manufacturers of OCTA-LOCK Buildings

Fabish & Jackson 2010 Ltd
'Your rotary cowshed builder'

Phone/Fax (06) 756 8099 - A/H 0274 470708
3 Kelly Street, Inglewood

Sprinting Sheep at Stratford



Stratford turned on a beautiful day for the annual A & P Show held last weekend these racing sheep were a highlight of the show
 Photo supplied by Michelle McLoven

The Stratford A & P Association had a great turn out last weekend the great weather ensured a huge turnout at the annual event. The hugely popular regular events included Old McDonalds Barn the Roadsafe climbing wall Sideshows and thrill seeking rides, chainsaw carvers, food and craft stalls, farm equipment, wood chopping, Cattle and Equestrian classes, Champion pigs, racing pigs too and some very fit shearers.

Novelty events included Sheep racing and a very talented dog herding ducks.

Congratulations to Christine and her team on another superb show .

JKL
 JOHN KELLY LIVESTOCK LTD
Gail Drought - Livestock Agent
 4036 Main South Road, Opunake | Ph: 06 761 7012 | Fax: 06 761 7018
 Mob: 0274 509 108 | Email: seaviewfarm@xtra.co.nz
JKL "Livestock, it's our lives"

Fitzgerald Contracting Kaponga
 4 x New Holland Balers
 2 x Mower Conditioners
 2 x Twin Satellite Wrappers
 Swather
 Plus STACKING SERVICE TRAILER WORK
 Contact: Arnold & Edith (06) 764-6604 or 0274 509 731



AT LEFT Scott Quinnell and Caleb Smith both from St Josephs Opunake won the Champion and Reserve Champion reared and paraded calf at the Stratford A&P Royal; event last weekend both calves are owned by Barry and Deidre Tippett Opunake

KURIGER BUILDERS mb Registered Master Builders
 "Building homes future generations would love to own"
 Building creators who partner with their clients and deliver exceptional homes
 KURIGER BUILDERS LATEST RECOGNITION : GOLD AWARD IN NEW ZEALAND ARCHITECTURE FOR RESIDENTIAL HOUSES.
 Ph Doug on (06) 761-8175 Mobile 0274 442 704

TARANAKI'S 4WD CENTRE - QUALITY & SERVICE

					
STUNNING \$31,990	LUXURY \$94,990	COMFORT \$42,990	VALUE \$13,990	FROM \$56,990	TOP EXAMPLE \$32,990
99 Landcruiser XX LTD 4.2 T/DSL 24 Valve Intercooled, Auto, Powersteering, Full Luxury Specs in warm silver.	2012 RangeRover Dynamic Evoque 2.0 & 2.2 T/DSL 3 & 5 Door Models, Demo Kms, Both Top Spec.	2010 Kia Sorento - R Ltd 2.2 T/DSL Auto, 7 Seats, Leather, 59kms, 1 Owner, S/ Roofs, Titanium Grey.	02 Toyota Rav 2.4 Ltd 5 Door Auto, P/Steering, Alloys, Rear Spoiler, NZ New, Electric Blue.	09/11 Land Cruiser 4.5 V8 T/DSL Flatdecks 2 to choose from, Low Kms, Fantastic Farm Vehicles.	2008 Toyota Hiace Van 3.0 T/DSL 5 Door, 5 speed. power steering, Air Conditioning, 48kms, Superb Commercial in Navy Blue

H Hareb Deken Motors RMVT
 TARANAKI'S 4WD CENTRE - VISIT www.harebdekenmotors.co.nz
 331 St Aubyn St • New Plymouth Ph (06) 759-9943
 FREEPHONE 0800 289 493
 A/H Mike Hareb (06) 752-7697
 Ton Deken (06) 752-7405 RMVT

Back doing the coast run!

After three years, John Judge has returned to Norwood and is once again doing the coast run.

“It’s good to be back,” said John. John has worked for Norwood for 28 years in total, though not

continuously having had several breaks. John did his apprenticeship in automotive diesel in

1974 at Norwood rising to become Workshop Foreman before leaving in 1985 for 5 years. He returned in September 1990 and was employed as Service Manager till 2000. He then took on a sales role out on the road beginning with the Coast run subsequently taking on the north and central run which included Mokau, Whangamomona and Stratford. He left in 2009.

Back at Norwood, John is taking over from Peter Laurence who is still with Norwood but returning to the lifestyle area he previously managed.

John says he’s enjoying being back on the road doing “what I know, something I like to do” and has been renewing old acquaintances. “I know a lot of people,” he says and adds he’s often greeted with “Oh you’re back again.”

John was born in the UK. His parents migrated to New Zealand in the 1970s when he was 17.

He and his wife later went back but “lasted a year”, he comments adding New Zealand was where he wanted to be. “One winter was enough,” he remarked with a grin saying they much prefer the New

Zealand climate.

Peter Naus, Sales Manager at Norwood, said he was delighted John was back on board.

“He’s got years and years of experience both in the workshop, service on the road and sales,” said Peter adding “I believe he’ll be offering genuine advice, selling the right machinery for the right job because of his experience.”

If anybody needs anything just make contact with John, he travels from New Plymouth to Opunake regularly.

His phone number is 027 538 7387

NEW COASTAL MACHINERY SALES REPRESENTATIVE



John Judge
Phone **0275387 387**
06 7575582

FOR ALL YOUR MACHINERY ENQUIRIES

NORWOOD 146 GILL ST, NEW PLYMOUTH
FARM MACHINERY CENTRE PH (06) 757 5582



John Judge from Norwood, back on the coast run.

COASTAL DRAINAGE LTD

- What we do:
- **Metaling • Screening**
 - **Section Work • All Farmwork**
 - **FOR SALE: Fines, Tanker Track Metal, Drainage Chip.**
 - **Oxidation Pond Cleaning 20,000 ltr tank**
 - **Septic Tanks**
- CALL TODAY
- 
- Coastal Rugby Draw Winner

Ph John price
Mob 027 444 9196
AH 06 76 38 223

Opunake 59 Tasman Street Opunake - 06 761 8686

4 FOUR SQUARE

\$ 4 Dollar Madness 2 times the fun!

Fruit Mince Pies 2 \$ 4 FOR	Kaye's Biscuits 2 \$ 4 FOR
Bluebird Chips 150g 2 \$ 4 FOR	Pepsi Range 1.5L 2 \$ 4 FOR

CHRISTMAS GOODS AVAILABLE NOW!!



Impressed onlookers watching Al herding the ducks at the Stratford A & P Show.

The Stratford A & P Show





Seed
coastal organics

**Under
New Management
Annie Newman**

Fair trade eco - friendly products
Organic vegetable seedlings & herbs
all at competitive prices



67 Carthew St, Okato, Taranaki
06 752 4888 email: seedcoastal@vodafone.co.nz

For all your agricultural machinery and parts contact

GARRY MILES

Your Coastal Rep
Living locally.
Available 7 days a week
Workshop on call.



AgTraction Taranaki Sales, Parts, Service
Waiwakaiho
0272 932 356
06 759 8432
www.agtraction.co.nz

For advertising phone (06) 761 7016

**Attend to all
those pesky
jobs before
Christmas**

**SINCLAIR ELECTRICAL
& REFRIGERATION**

Opunake 761 8084 Kaponga 764 6084
Okato 751 408 Manaia 274 8084



GET YOUR LAWNMOWER & CHAINSAWS SERVICED HERE!
We service all types of LAWNMOWERS, BIKES, CHAINSAWS & ROD & REELS.

STARTING PROBLEMS?
NOT ANY MORE...



HP AVAILABLE ON MOWERS

COLLINS SPORTS CENTRE
Tasman St. OPUNAKE Ph 761-8778
OPEN SATURDAY 9AM TO 12NOON

ABOVE: Amy O'Rourke from Opunake handling her brothers calf at the Egmont A&P Show
AT LEFT: Finn Mullin from Ngaire buddies up with a kunekune piglet at the popular Old McDonalds Farm at the Stratford A & P Show



JSL

Juffermans Surveyors Ltd

- >> Site Surveys
- >> Subdivisions
- >> Resource Consents
- >> Boundary Locations
- >> Easements

t >> 06 278 4135
e >> info@juffermans.co.nz
79 Princes Street, Hawera

Sportfunder raises much needed funds for Paige Hareb



Paige Hareb in action.

Crowdfunding website Sportfunder has ensured Kiwi professional surfer

Paige Hareb will continue to compete by helping raise more than NZ\$16,000 to-

wards her 2013 ASP World Tour. Having struggled to find enough sponsor funds

for the next tour and as the only Kiwi on the tour, Paige was facing withdrawing as prize money alone was unlikely to fund all the travel costs required to compete on the tour.

“Although I have support from several sponsors, I’m struggling just to have enough money to get from event to event,” explains the 22-year-old from Taranaki.

“For the last few years on Tour it’s been costing me about NZ\$60,000 [about \$49,500 USD], just for accommodation, flights, and rental cars.”

Currently ranked 10th on the ASP Women’s Tour, Paige won US\$48,100 during the 2012 tour which barely covered her travel costs on a tour encompassing events in Australia, New Zealand, Brazil, France and the United States of America.

“Sportfunder has already enabled me to raise enough

funds to start the tour and be able to focus on competing - and not only if I can even afford to go to the next event - it’s been a huge relief.”

Sportfunder creator, Craig Williamson, is thrilled that the fledgling crowd funding site is proving successful for sports people to compete.

“Sportfunder enables the public to get behind and financially support their chosen sports person - and receive rewards for doing so,” explains Mr Williamson.

“And that’s a global public as Paige has received support from as far afield as Japan, the United States, and Australia which just shows the huge reach and potential pulling power of Sportfunder and the international appeal of supporting an outstanding sportswoman such as Paige.”

As executive officer for Surfing Taranaki Incorporated,

Mr. Williamson has hosted the ASP Women’s World Surfing Tour in Taranaki for the last three years.

To do so, he knows how hard it is to find corporate funding in a recession as he has had to raise approximately NZ\$500,000 each year to run the event and provide the necessary prize money.

To encourage sports teams and individuals wanting to raise much-needed funds to give crowd funding a go, Sportfunder is itself pledging \$100 / £100 / €100 (or equivalent) towards projects that have a fundraising target of at least \$2000 / £2000 / €2000 (or equivalent).

“Sportfunder has a straight forward process for loading a fund-raising project but if anyone needs advice or more information feel free to email us any time connect@ sportfunder.com or phone me on 0064 (0)27 6874122,” says Mr Williamson.

Opunake Pony Club Success

Right: Novice Paced & Mannered Hack placegetters: First, Lauren Stevens - Tuis Midnight Rhapsody (New Plymouth), Second Audrey Quin - Katie Did (Opunake), Third Emilie Husillos - Cisco Kid (New Plymouth), Fourth Stephanie Clement - Ashburn Elegance (Opunake).

Advertise your summer holiday events and activities in our Holiday Guide supplement.

Only two issues left for 2012 - Dec 13 and Dec 20.



See our website www.opunakecoastalnews.co.nz for all our new email addresses or refer page 2.

Craig ELECTRICAL
Corrigan ELECTRICAL
OPUNAKE

For all general electrical and wiring work.
Domestic and farm maintenance, new houses and cowsheds.

Ph Craig on 027 207 7775

Spruce up for Golf clubrooms

The Pungarehu club house is getting a face lift thanks to the TSB Community Trust. They have kindly granted us \$12,000 to re clad our damaged outer walls and with the money we have raised over the last two years we are now able to get the outside water-proofed and stop the de-

terioration of the building. A very big thank you to Phil Brophy (Brophy Builders) who has taken on the job; with his expert advice and work ethic, the results look stunning. Members have been spending more time away from their normal jobs to help out and Ross Martin our project manager has kept them all organ-



The team from Brophy Builders on the job.

ised. Paint is needed for the rest of the block walls and an enterprising member has entered us in the Resenes’ promotion with The Golf Club show on TV. We are down to the last four entries of which voting for your club will determine the winner. If you think we are a deserving golf club go to the web site and please vote for us. We are the only one left in the Taranaki region - www.facebook.com/TheGolfClubTV.

HUGHSON & ASSOCIATES

WE ARE YOUR PERSONAL, FRIENDLY FARMING & BUSINESS ACCOUNTING SPECIALISTS

0800 ACCOUNTANT 2 2 2 6 8 6

OPUNAKE OFFICE is OPEN every WED 9.30am-3pm
Ph our Hawera office on (06) 278-4169 • 26 Wellington St, Hawera
or E-mail: services@hughson.co.nz www.hughson.co.nz

YOUR CHARTERED ACCOUNTANT

- is a member of the New Zealand Institute of Chartered Accountants
- studied for 7 years to achieve his professional qualification
- is required to undertake on going professional development
- is bound by a code of ethics and professional standards
- has a professional qualification from New Zealand that is internationally recognised

Look for the word **“Chartered”**
your assurance of quality

Mark G Hughson, B.B.S., C.A., Dip B.S.

Dorothea Henry

CHARTERED ACCOUNTANTS

Multiple musical treat with Dame Malvina as the icing on the cake



Dame Malvina Major singing in Opunake recently.

Multiple musical treat with Dame Malvina as the icing on the cake

The audience on Saturday November 24 had a multiple treat in store, while they listened to a concert, organised by the Egmont Community Arts Council at the Opunake High School Hall. The event was part of their thirty year celebrations. Murray Weir did a great job as MC – with an able mix of introductory information and humour. Patron Gabrielle Barr provided a warm welcoming speech.

Undoubtedly the star was Dame Malvina Major – lately of Hamilton. She claimed

that her repertoire and voice was restricted by having a cold, but no one seemed to be aware of any attenuation of her range and excellence. My personal favourite of her selection was ‘O Mio Babbino Caro’ by Puccini.

First on stage was the always excellent Coastal Singers, under the musical guidance of Noeleen Moir. I especially enjoyed their ‘What a Wonderful World’, which was arranged by Mark Brymer.

The third musical delight was local pianist Troy Stevenson who played Chopin’s ‘Nocturne No 1 with



The Coastal Singers at the recent concert featuring Dame Malvina.

sensitivity and finesse. Later on he returned to play Saure Barcarolle No 1 to considerable applause.

The final aspect was the performances of three of Malvina’s protégés – Beverley Pullon, June Dams and Jarvis Dams. Kirsten Simpson provided inspired ac-

companiment on the piano. Obviously, Dame Malvina’s expertise extends to tuition as these three were most entertaining, with a compelling dramatic flair, as they sang solo, duos and even once as a trio – ‘Soave sia il vento’ by Mozart. Caleb Bishop-Gilmor did a great

job with lighting and sound, Harry James and Val Wallace presented a bouquet to Dame Malvina, along with an amusing speech. Dame Malvina, in her reply, said she planned a return visit next year, with another selection of talented musicians – instrumentalists as well as

singers.

There were many who contributed to make this a memorable evening, including the Lakeside Lions for their enjoyable supper at half time. Well done everyone.

Christmas homes are here again

A list of the Opunake Lakeside Lions Christmas homes is at St Barnabas Anglican Church in Tasman Street, Opunake and includes a variety of town and country residences all charmingly decorated for the festive season.

There will be a \$5 entry to individual venues which will probably suit the elderly who do not want to make the day too strenuous. Otherwise there is an overall charge of \$25 to visit all the homes. The Lakeside Li-

ons are running a cafe with light refreshments at one of the venues that also features a lights and Christmas tree display.

There is also a Christmas Market at St Barnabas along with vintage cars on display. Santa will also be visiting for one hour each day from 2-3pm with photographs with Santa available to remember the event.

“We think it will make for a lovely day “down on the coast” and look forward to seeing lots of visitors from

the rest of Taranaki,” said Kaye Mourie from the Opunake Lakeside Lions Club.

“We have tickets sales all around the mountain.”



Dame Malvina’s proteges, from left, Beverley Pullon, Jarvis and June Dams.

On this month in history

On November 29, 1929 Richard Byrd of the USA began his successful flight over the South Pole, accompanied by three crew members. He flew a Ford Trimotor from the Ross Ice Shelf to the South Pole and back in just over 18 hours.

In 1926 Richard Byrd claimed to be the first to have flown over the North Pole, but his claim was contentious. However, he was able to uphold his claim and is considered to be the first person to fly over both the North and South Poles.



- Vehicle Signage
- Building Signage
- Logo Design
- Digital Printing
- Stone Guard Bonnet Protection
- Honours Boards
- For All Your Signage Needs

Member of...



PH. 06 278 6224
220 South Road Hawera

EQUINE SERVICES AND TRAINING FACILITY

WHERE WE FIX BROKEN HORSES

DAVID STEWART
HORSE WRANGLER AND NATURAL FARRIER

SPECIALISING IN

- FLOAT LOADING
- FIRST CONTACT HANDLING
- BEHAVIOURAL PROBLEMS
- NATURAL HORSEMANSHIP LESSONS
- CORRECTIVE TRIMMING
- RIDING LESSONS

60 WELD ROAD OAKURA

027 629 5056
a/h 06 752 7454

0800 BULL HIRE

2 8 5 5 4 4



A few Ayrshires and Friesians
- 2 Year Bulls for Cows.

Enquiries Welcome.

Washer & Co Oakura

Talk to Sean on **0800 BULLHIRE**
0800 28 55 44

PS: Glen and Les at Sandfords organise most of the bull transporting. From experience we've found that delivery -

- Yesterday = impossible
- Today = sometimes can be arranged
- Tomorrow = a little easier
- Sometime this week = easy

FOR SALE

A TOTAL BODY SUPPORT for seasonal allergies or sinus infections acute or chronic, addresses the 3 body systems involved in sinus and bronchial health. Get onto it before the allergy season. Non drowsy formula. At Hardy's the health shop in Centre City 7587553

BACK PAIN CONTROL an effective combination of herbs and nutrients specifically designed for the symptomatic relief and management of lower back pain. At Hardy's the health shop in Centre City 7587553. We deliver.

D-RIBOSE as seen on TV Is Modern medicine killing us. Ribose Powder restores the basic energy of your body and maintains its full charge during the day. Ribose is produced in the body, naturally, although this process is very slow. D-ribose powder can quickly restore and maintain your depleted energy reserves and, as a consequence, the daily consumption of this additional powder reduces muscle stiffness, soreness and fatigue. As one of the most popular supplements among endurance athletes, ribose helps athletic performance, supplying the cells of muscle tissue with a continuous supply of adenosine triphosphate (ATP), which is known as cellular energy. Ribose is natural sugar, which can be found in all living cells. Available at Hardy's the health shop in Centre City 067587553 we deliver.

LAWNMOWERS SECONDHAND
Pushmowers and ride-on mowers. All workshop serviced. Available at Collins Sports Centre, Opunake

NEW STOCK MGP SCOOTERS arriving daily, parts now in stock. Available at Collins Sports Centre, Opunake

MAGNESIUM is by far the most important element needed in our bodies, activating over 350 different chemical reactions all necessary for the body to function properly. Symptoms of magnesium deficiency: cramps, muscle twitches, agitation, anxiety, restless sleep, headaches, tiredness to name just a few. Available at Hardy's the health shop in Centre City 067587553. We deliver.

BABY GEAR Babylove, Moturoa Shopping Centre, New Plymouth. "A Mum's Market Every Day". Come and see us first for all your baby requirements. We buy and sell quality baby equipment. Open Mon - Sat. Phone 06-751-0106. Find us on Facebook.

BARGAINS 2ND ANN'D Treasures, Trousers, T.Shirts, Trays, Toys etc. 230a Omata Road. Wed - Fri 1pm - 5.30pm, Saturday 10am - 2pm. 027 5605 186

WANTED TO BUY

Car stereo which has a tape deck for playing audio tapes.
Please phone (06) 761 8206, (06) 761 7016.

TRADES & SERVICES

FREEVIEW dishes and aerials. TV tune in or set up Freeview box. Phone Rob at Taranaki Aerial Services: 0800 284 396

Coastal Cleaning Services

If it needs cleaning - you need me.
20 yrs exp. Inside or outside. No job too big or too small.
Ph 027 237 8563

LAWNS NEED MOWING? We mow lawns! Phone 0274 572 741 or A/H 06 764-8885.

PAINTING & PAPERING

Tradesman - FREE quotes
G & E Lindsay
Ph (06) 752 1113 or 027 651 0148

COASTAL STOPPERS. GIB Phone Glenn 027 524 5745.

PAINTER PAPERHANGER for all your interior decorating and any necessary insurance work
Phone Bryan 0274658631

PUBLIC NOTICE

Reflections Counselling Services
89 Regan St, Stratford
Tuesday & Wednesday by appointment
Ph 06 765 8280
Faith Smith MNZAC
Diploma in Counselling
WelTec

FOR HIRE

NEED EXTRA ROOM?
Move a cabin to your site. Many uses. Power, insulated. 3.6 x 2.4m. Minimum hire 6 months. Very smart appearance.
\$50 pw



Ph 0800 111 344 or 06 754 8421

HELP WANTED

WANTED Tutor to help student with English. Suit retired English Teacher.
Please Phone Lee Ann 06 761 8060

PUBLIC NOTICES

Rahotu Plunket
Would like to thank Metalcraft, Brophy Builders, Rahotu Lions and the Community for their wonderful contributions towards our Plunket Rooms

Taranaki Indoor Bowls Centre Special Open Meeting

To discuss the future of Indoor Bowls in the Taranaki Centre.

Sunday 9th December 7.30pm in the Hawera Bowling Clubrooms

ALL BOWLERS URGED TO ATTEND

OPUNAKE HIGH SCHOOL GATEWAY 2012



The students and staff of Opunake High School would like to sincerely thank the following businesses and organisations for providing work experience for our Gateway students in 2012:

- | | |
|------------------------------------|---------------------------------|
| Vertigo Ltd | Mark Tatham Building Co. Ltd. |
| Rahotu School | Hairazor |
| Dave Gibson Plumbing | ESpresso Café |
| TRFU | Brophy Builders |
| The Print Shoppe | Pickering Motors Ltd. |
| New Life Nursery | Mediaworks Taranaki |
| AEA Stainless | Stanley Bros Ltd |
| Hawera Hospital | Headlands Restaurant |
| Cleaver & Moore Hairdressing | R & C Poole |
| Kougars Auto Electrical Ltd | K & R Short |
| Croucher & Crowder | Opunake Kindergarten |
| Cameron Rigging & Scaffolding Ltd | Coastal Veterinary Services Ltd |
| Bailey's Motorcycles & Dismantlers | The Waterfront |
| Opunake Playcentre | John Wheeler Stables |
| Pastimes | WITT |

SITUATIONS VACANT



Receptionist/Vet Nurse

A position has become available to cover Maternity leave starting January 2013 in our Opunake Clinic. Please send CV to: Greig Hollway, Coastal Vets, P O Box 45, Opunake 4645. Applications close 14th December 2012

Support Worker

Urgently required

Healthcare NZ is looking for a person who can support people to live independently in their own homes around Opunake and surrounding district. We have an opportunity for a part-time person to work on an assignment basis in the area. If this sounds like you and you have a reliable vehicle and a telephone then please call now

Phone (06) 2780096 or e-mail hawera.office@healthcarenz.co.nz

CHURCH NOTICES

Opunake & Okato Co-operating Parish CHURCH SERVICES
St Paul's Opunake Co-op & Rahotu
Opunake Cooperating Parish St Pauls, Havelock St, 9.30am every Sunday and the
Rahotu - Wesley - 11am first Sunday of the month.
Oakura - St James - 10am, 2nd & 4th Sundays.
Okato - St Pauls - 10am, 1st & 3rd Sundays.

Opunake Catholic Church
SUNDAY 8.30 am at Pungarehu (St Martins), 10am at Opunake (Our Lady Star Of The Sea).

Other areas
Manaia - Sacred Heart - 1st & 3rd Saturdays at 5pm (2nd, 4th and 5th Sat at Hawera's St Josephs).
Kaponga - St Patricks, Sunday 8.45am
ALL WELCOME

PUBLIC NOTICES

Opunake Business Association NEXT MEETING

Monday December 3rd at Opunake Surf Inn
5:30 Social, 6.00 pm Meeting
We welcome any member of the community to our meetings, you don't have to have a business.

BUSINESS FOR SALE

SIGN SHOP, very exciting industry, all training provided, very affordable price, ph 06 761 8020, 0274 628 632

LOST

MISSING from Main Road South Road. One black cow no. 233. please phone 761 8637

Now open in Opunake Want to learn more about

Reiki?

1st level

Sat 24th

& Sun 25th

November

9.30am - 4.30pm

for more info

Ph Sylvie: 027 316 3706

Advertising - it works!

Ph 06 761 7016

Subscriptions of the Opunake & Coastal News are available to those who live outside the area and wish to keep in touch. Our office is at 23 Napier Street, Opunake.

WHAT'S ON

PLUS ONE AT PTO GALLERY

45 Bridge Street Eltham Opening Fri 30 November - refer advert

OPUNAKE PRIMARY SCHOOL TWILIGHT GALA

Friday 30 November 6pm - 8pm - refer advert

VILLAGE GALLERY ELTHAM

19 Nov to 15 Dec 10am to 3pm Monday to Saturday - refer advert

INTRODUCTION TO SPIRITUAL DEVELOPMENT

Saturday Dec 1 and Sunday Dec 2. - Refer Reiki advert

CHRISTMAS HOMES FOR HOSPICE

Sat 1st and Sun 2nd December - refer advert

VIRTUES FROM THE PAST – DAME KATE HARCOURT

Sunday Dec 2 at Cue Theatre Inglewood. (Refer advert)

OLEX FUN RUN

Sunday 2nd Dec 9.am start. at Coastal School - Refer Hardy's advert

OPUNAKE BUSINESS ASSOC MONTHLY MEETING

Monday Dec 3 at Opunake Surf Inn, 5:30pm social, 6:00pm meeting

THE WARDROBE - LADIES NIGHT OUT SHOPPING

5 Dec 5pm to 9pm, 154 High Street Eltham

OPUNAKE HIGH SCHOOL – FAREWELL TO DAVID NICHOLAS

Dec 7th - To celebrate his 37 years' service. RSVP the school by Nov 30.

TENDERS CLOSE FOR PRIME OPUNAKE BUSINESS

Friday Dec 7. (Refer Selwyn Metcalfe Real Estate advert).

HAWERA REP - AUDITIONS FOR WIZARD OF OZ

8 - 9 Dec. Children 2pm - 4pm, adults 7pm - pm - refer advert

TARANAKI INDOOR BOWLS CENTRE - SPECIAL MEETING

Sunday 9th December 7.30pm - refer advert

TEAM SWISH - CJ TAAMARU FUNDRAISER

Sun 9th December Sandfords Event Centre - refer advert

LOCAL HANDCRAFTS INC

Saturday Dec 15 at 9.30am – 3.30pm. (Refer advert).

COASTAL TARANAKI HEALTH TRUST AGM

Monday Dec 17 at 7.30pm. (Refer advert)

HOLIDAY ART WORKSHOPS

Explore techniques in sculpture and printmaking (Refer advert prev issue).

Boy and his bovine buddy



Reeve Wilson and his calf Jackie relax between calf classes at the Stratford A&P show last weekend.

Let us shine the light on your Business

For advertising phone (06) 761 7016

Movie Meal Deal \$25
Great as a gift voucher - affordable fun

Affordable Family Dining
Hours: 7 Days I am until late
58 Victoria St, Hawera Ph (06) 278-5647

OPUNAKE LAKESIDE LIONS PRESENT

CHRISTMAS HOMES FOR HOSPICE

DECORATED HOMES AND CHURCHES

We hope you enjoy viewing these beautiful venues - all of which have been decorated by home owners and friends to inspire you in your home decorating for Christmas.

All proceeds go to **hospice taranaki**

SAT 1ST & SUN 2ND DECEMBER 2012
10AM - 4PM
\$25 per ticket or \$5 per individual venue

Tickets available from:
OPUNAKE - The Print Shoppe, Pastimes, Sinclair Electrical
ELTHAM - 164 on High Hair Design
HAWERA - Naturally Unique Hair Salon
STRATFORD - In Stitches
NEW PLYMOUTH - The Office at Te Rangimaire Hospice - David St (office hrs)
Frederic's No 34 on Egmont Street

Recent Taranaki Photographs

Local Handcrafts Inc

Next event is on December 15th
 9.30am - 3.30pm
 at St Mary's Hall, 36 Vivian Street
 New Plymouth
 Phone: Topsy Lynch (06) 758 6112
 for further information

UNDER THE CHRISTMAS TREE an exhibition by Members of THE VILLAGE GALLERY

*especially created
 with gifts in mind*

19th November - 15th December
 10am - 3pm Monday - Saturday

166 High St, Eltham



Hawera is the last stop for a series of black and white photographs of Taranaki being toured around the mountain this year.

Renowned photographer Laurence Aberhart acknowledges his love of the region with this exhibition Recent Taranaki Photographs that hones in on familiar places we tend to overlook.

Hawera's Lysaght-Watt Gallery is showing the artworks until Sunday 2 December.

The exhibition, toured by the Govett-Brewster Art Gallery in New Plymouth, was shown at Inglewood's Fritz Reuter Gallery earlier this year, then Stratford's Percy Thomson Gallery and Patea's Aotea Utanganui - Museum of South Taranaki.

Laurence Aberhart's photographs are among the most respected and memorable artworks produced in New Zealand over the last four decades.

In Laurence Aberhart: Recent Taranaki Photographs, Aberhart is absorbed in capturing the architecture and



Laurence Aberhart's Taranaki from Rahotu, Taranaki, 1 July 2010

landscapes that we may barely notice or see ourselves. Sometimes melancholic, sometimes quietly humorous, his series of black and white photographs explore landscapes and the memories embedded in the relationship between natural and built forms.

Laurence Aberhart: Recent Taranaki Photographs is a 2009-2011 commission from the Govett-Brewster Art Gallery, with support from the TSB Community Trust and the Lysaght-Watt Trust through the Govett-Brewster Foundation.

A new publication is available for purchase at the Lysaght-Watt Gallery, including essays, interviews and all images from the exhibition, as well as images of Laurence Aberhart's Taranaki works from the Govett-Brewster Collection.

STRATFORD ART SOCIETY EXHIBITION



Maree Liddington

23 Nov - 14 Dec 2012

PERCY THOMSON GALLERY

MIRANDA ST STRATFORD

10.30 - 4.00 weekdays
 10.30 - 3.00 Sat Sun

Percy Thomson exhibition



This montage (LEFT) entitled 'Global Warning' is by Sue Morton. The exhibit is part of the Stratford Art Society's bi-ennial art exhibition and continues until December 14 at the Percy Thomson Gallery, Stratford.

The exhibition includes their work of new members exhibiting for the first time, as well as the more established members.

With Christmas so close here is your chance to purchase some original art work. Exhibits include pottery, wood turning, textiles, photography, painting and sculpture.

An added attraction is a sales table for art books and magazines, as well as a pot luck Christmas hamper raffle.

GOVETT-BREWSTER ART GALLERY



Laurence Aberhart

Recent Taranaki Photographs

8 November - 2 December 2012

Lysaght-Watt Gallery Hawera

Image: Laurence Aberhart
 Interior, hair salon, Opunake, Taranaki,
 1 June 2010. Govett-Brewster Collection

Te Kaunihera-a-Rohe o Ngāmotu
 NEW PLYMOUTH DISTRICT COUNCIL
 newplymouthnz.com

TSB Community Trust

LYSAGHT-WATT TRUST

Stoney Oaks Wildlife Park (For the Ultimate Animal Experience)

Open
 Sundays

11am to 4 pm

Ph: (06) 756-7624
 for prices & directions.
 NO eftpos.

Don't miss close encounters of the animal kind
 Meet All our beautiful Spring babies.

Fairy Bush walk and row boat, hand feed possums, pat goats and llama, brush cow, Cuddle rabbits and guinea pigs. bottle feed our babies etc. See Zeus the Tibetan Yak, Caltus the American Bison, Highland cattle, rub kune kune pigs tummies. Enjoy a wonderful day in the country—bring a picnic and your camera.

Vicki's Christmas craft



Vicki Sandford shows a small selection of her craftwork.

Opunake's Vicki Sandford has two guiding principles – she likes to keep busy and

she is keen on recycling. She has made a huge selection of Christmas and general craft

items, including decorated Christmas trees (in three sizes).

"I can't sit and do nothing", she explains.

These eye-catching items are all on offer at very competitive prices – in fact her most expensive item costs just \$15.

One example of Vicki's expertise are her brightly coloured sun hats, which she makes out of recycled bread bags.

She also makes women's knickers, bag holders, toilet roll holders, lolly models, salt shakers, draught stoppers, and tasselled blankets – and much more.

Call around and see her selection at 24 Whitcombe Street, Opunake or phone her at 06 761 8463.

Remember, Christmas is just around the corner and here are some great gift items to consider.



**Opunake Primary School
Twilight Gala**

**Friday 30th November
6 - 8pm**

Great Entertainment

**Haunted House. Battens Up. Cake Stall.
White Elephant. Book Sale. Hangi.**



154 High Street.
PO Box 17,
Eltham 4322
Ph: 06 764 5010

Email: thewardrobe@td@yahoo.co.nz

**THE LADIES NIGHT OUT SHOPPING!!
5th December 2012 - 5 PM to 9 PM
Free Drinks and Nibbles provided**

**10% Off everything in the shop
that is not already discounted**

**SPOT PRIZES DO YOUR CHRISTMAS SHOPPING
AT THE ONE PLACE!!
Where: THE WARDROBE
154 HIGH STREET, ELTHAM**

**To Advertise here
Phone: 06 761 7016**

Taranaki woman to attempt Cook Strait

Aletta Lovell describes herself as, "an everyday kiwi woman". However, some would consider her not to be so "everyday". She grew up on a farm in the Wairarapa, enjoying holidays by the sea and then decided to embrace that passion for the sea by training as a Coastguard volunteer. This journey led her to be one of the brave Coastguard volunteers who were involved in the rescue which saved two lives and earned Coastguard South Taranaki the national Rescue of the Year Award for 2012.

It is this same spirit and dedication that has seen her undertake 12 months of training at the Powerco Aquatic Centre, six days a week, two hours a day, in

preparation for swimming Cook Strait in February 2013.

With the support of Mayor Ross Dunlop and the South Taranaki District Council, Aletta's fundraising campaign to raise money for Coastguard is kicking off this week.

Leading up to her epic 26km swim of Cook Strait, many fundraising events are planned throughout New Zealand. You can keep up to date with these on Aletta's website – www.swimcook-strait.co.nz.

The fundraising events include an online Charity Trade Me auction, with some amazing items with just a \$1 reserve. These are timed to close on Sunday December 9 - just in time for Christmas.

There's something for everyone in the auction. Items already donated include a fantastic Samsung Home Theatre System worth \$1899, a return trip for the family on the InterIslander and everything from fishing rods to food.

Aletta is asking businesses to get behind her fundraising efforts now, and donate items for the Trade Me Auction. Information can be sent to kylie.gibbard@coastguard.co.nz. Individuals and businesses can make cash donations online at www.swimcook-strait.co.nz, or phone 0900 SOS SOS to make an automatic \$25 donation. There is also a donation box located in Hawera ASB bank.

For those interested in sporting history, Cook Strait was first swum by Barrie Davenport in 1962 in 11 hours and 13 minutes. The time for the 20km distance has since been beaten many times.

Fun Run/Walk Series



**Sun 2nd
Dec - Okato
2 / 5 / 9 / 16km
16km Walk
- 9.00 am Start
Everyone else
10.00am Start**

**Fantastic Prizes!
- Watches from
Michael Hill
- Lots of Hardy's
Christmas Trays
- \$100 notes
- plus plus plus**

**Be there
for a family
fun day at
Coastal School**

Team Swish CJ TAAMARU FUNDRAISER



**Sunday 9th December 2012
Sandfords Event Centre**

**Basketball
1.30pm
North vs South
Senior / Junior Girls
Minimini Basket Ball
4.30pm
"SWISH" CELEBRITY
MATCH
Gold Coin Donation**

**Dinner & Auction
6.30pm
\$30 per Adult - 12.50
per Child (under 12)
Tickets available from
PASTIMES & OPUNAKE
POST / LOTTO SHOP
(NO DOOR SALES)**



**HARDY'S
HEALTH STORES**
We keep you healthy™

Centre City Shopping Centre Ph: 06 758 7553



'Under the Christmas Tree'

The Village Gallery's final exhibition for the year is currently underway, and continues till 15th December.

As the title suggests the exhibition features work especially created by gallery members with Christmas gifts in mind.

Of note this month, is work by a father and son. Graeme Hotter of Eltham and son Adrian who both have paintings on display.

Graeme is known for his cartoons and maps, but this time has produced several large landscapes of the countryside around Eltham.

These are 'Eltham from Burkes Hill', 'Native Bush at the Stratford Mountain House', 'Waterfall on the Eltham Walkway',

and a commissioned work of an Eltham farmhouse with the ever present mountain in the background.

In contrast, Adrian has a gift for painting animals, and has submitted three works.

These are 'Zebra', 'Golden Spaniel' and 'African Elephant'.

As well as the paintings, Graeme has a new selection of cards, and posters for sale. He has also produced a photographic book of his artworks which shows the great range of his artistic skills.

A new member, Jean Franklin, has several large and dramatic paintings on display, while the work of Jennifer Gooding in watercolour is a softer and reflective work.

The great range of art in this latest exhibition at The Village Gallery is well worth a look. But, don't delay, it closes on 15th December.



'Eltham from Burkes Hill' by Graeme Hotter



'Zebra' by Adrian Hotter

Town and country Christmas homes

A list of the Opunake Lakeside Lions Christmas homes is at St Barnabas Anglican Church in Tasman Street, Opunake and includes a va-

riety of town and country residences all charmingly decorated for the festive season.


There will be a \$5 entry to individual venues which will probably suit the elderly who do not want to make the day too strenuous. Otherwise there is an overall charge of \$25 to visit all the homes. The

Lakeside Lions are running a cafe with light refreshments at one of the venues that also features a lights and Christmas tree display.

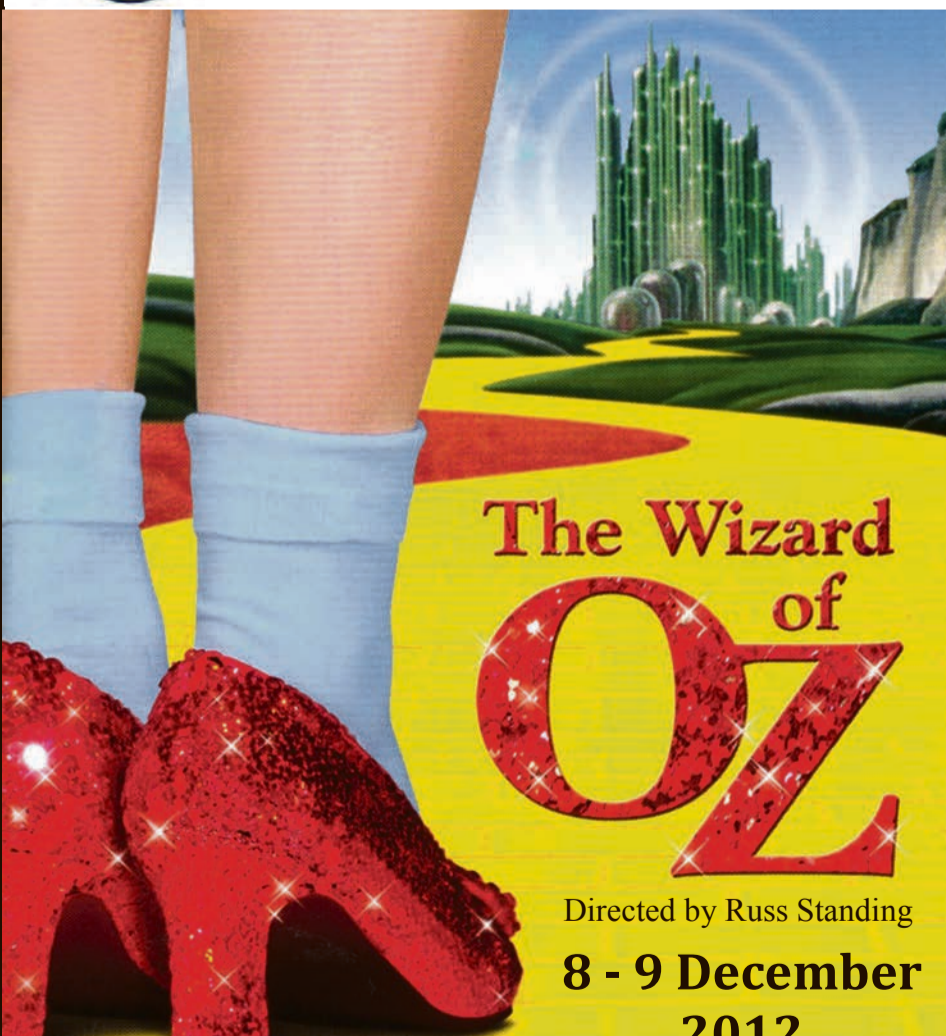
There is also a Christmas Market at St Barnabas along with vintage cars on display. Santa will also be visiting for one hour each day from 2-3pm with photographs with

Santa available to remember the event.

"We think it will make for a lovely day "down on the coast" and look forward to seeing lots of visitors from the rest of Taranaki," said Kaye Mourie from the Opunake Lakeside Lions Club. "We have tickets sales all around the mountain."



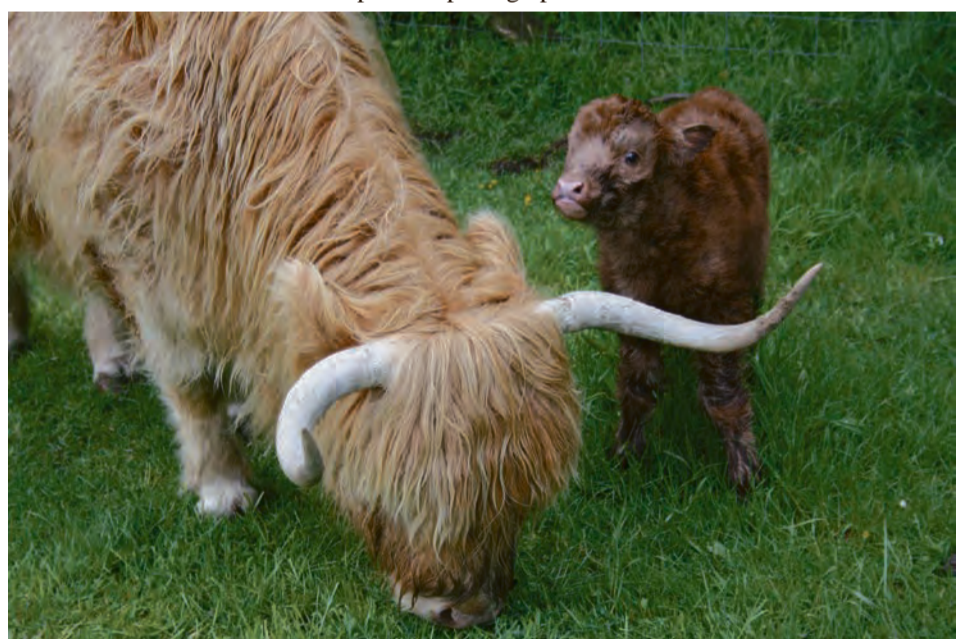
AUDITIONS



The Wizard of Oz

Directed by Russ Standing
8 - 9 December 2012

Repertory House, 59 Collins Street, Hawera
Children 2-4pm Adults 7-9pm (or by appointment)
Contact: Russ Standing 06 278 4609 or russellss@xtra.co.nz
www.hawerarep.org



Cute

Haven, the new and adorable Highland heifer calf born recently at Stoney Oaks Wildlife park at Inglewood to proud mum Penny. She is such a bright red colour and "just gorgeous" according to Gail Simons, owner of Stoney Oaks who sent the photo into the Opunake & Coastal News.

PLUS ONE

Please join PTO Gallery & our artists for the exhibition opening Friday 30th of November 2012

Maree Horner + Angela McAlpine
Catherine Macdonald + Frances Stachi
Marianne Muggeridge + Louise Rive
Katey Pittwood + Katie Baylis
Michaela Stoneman + Beck White
Catherine Tamou + Anna Korver



PTO Gallery contemporary art
45 Bridge Street Eltham Taranaki 067645064 -Fri-Sat 10-5 sun 11-4 & by appointment
www.ptogallery.co.nz

exhibition continues until 23rd of December